

4

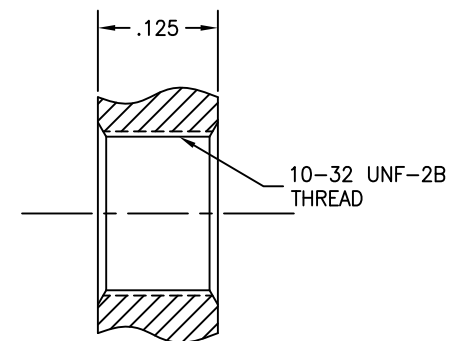
3

2

1

P/N	Ø A	INTERFACE	INTERFACE (ON HEX SIDE)	FIGURE
-1CCSF	.116±.001	FULL DETENT	CATCHERS MITT	1
-2CCSF	.120±.001	LIMITED DETENT		
-3CCSF	.125±.001	SMOOTH BORE		
-4CCSF	.116±.001	FULL DETENT	SMOOTH BORE	2
-5CCSF	.120±.001	LIMITED DETENT		
-6CCSF	.125±.001	SMOOTH BORE		
-7CCSF	.116±.001	FULL DETENT	LIMITED DETENT	3
-8CCSF	.120±.001	LIMITED DETENT		
-9CCSF	.125±.001	SMOOTH BORE		
-10CCSF	.116±.001	FULL DETENT	FULL DETENT	4
-11CCSF	.120±.001	LIMITED DETENT		
-12CCSF	.125±.001	SMOOTH BORE		

REVISIONS			
REV	DESCRIPTION	DATE	BY
D	ECO 12058	08.02.00	DKN
E	ECO 20085	03.26.07	DKN
F	ECO 202352 (ADD NEW NAME)	12.02.24	DKN



MOUNTING HOLE PATTERN

Note:
Locknut & Lockwasher to be shipped unassembled.

CONFIGURATIONS SHOWN ON SHT 2 & 3

MATERIAL:	ELECTRICAL:	MECHANICAL:	ENVIRONMENTAL:
Body, Insert, Locknut & Lockwasher: 303 sst per ASTM A-582. Center Conductor: BeCu alloy per ASTM B-196. Insulator: PTFE per ASTM D-1710.	Impedance: 50 Ohms nominal. Frequency Range: DC to 18 GHz. VSWR: 1.15:1 max to 18 GHz. Insertion Loss: .30 dB max to 18 GHz. Working Voltage: 335 Vrms max @ sea level. Dielectric Withstanding Voltage: 500 Vrms min. R.F. HiPot Voltage: 325 Vrms min @ 5MHz. Corona Level: 125 Vrms @ 70,000 ft. Insulation Resistance: 5000 MegOhms min. Contact Resistance: Center Contact: 6.0 Milliohm max. Outer Contact: 2.0 Milliohm max.	Mating Characteristics: Interface per Mil-Std-348. Force To Engage & Disengage: Engage: Full detent: 10.0 lbs max Limited detent: 5.0 max Smooth bore/Catchers mitt: 2.0 lbs max Disengage: Full detent: 2.0 lbs min Limited detent: 1.5 lbs min Smooth bore/Catchers mitt: .50 lbs min Center Contact Retention: Axial Force: 1.5 pounds min. Radial Torque: NA Connector Durability: Depend on detent	Temperature Range: -65°C to +165°C. Thermal Shock: Mil-Std-202, Method 107, Test Cond. B. Moisture Resistance: Mil-Std-202, Method 106, except step 7b shall be omitted. Insulation resistance at least 1000 MegOhms within 5 minutes after removal from humidity. Corrosion: Mil-Std-202, Method 101, Test Cond. B. Vibration: Mil-Std-202, Method 204, Test Cond. D. Shock: Mil-Std-202, Method 213, Test Cond. I.

FINISH:	APPLICABLE Amphenol CDI DOCUMENTS	TOLERANCES AND NOTES EXCEPT AS NOTED	MATERIAL	SPECIFICATION	PROCUREMENT										
Body, Insert, Locknut & Lockwasher: Passivate per ASTM A-967 or SAE-AMS 2700. Center Conductor: Gold plate per ASTM B-488, Type II, Code C or D, .000050 min thick; over nickel under plate per SAE-AMS-QQ-N-290, Class 1, .00005 min thick.	<table border="1"> <thead> <tr> <th>WORK STD</th> <th>PROD INST</th> <th>ASSY INST</th> </tr> </thead> <tbody> <tr> <td>NA</td> <td>NA</td> <td>NA</td> </tr> </tbody> </table>	WORK STD	PROD INST	ASSY INST	NA	NA	NA	<p>INTERPRET DRAWING PER ASME Y14.5-2018</p> <p>DIMENSIONS ARE IN INCHES:</p> <p>LINEAR .XX ±.015 .XXX ±.005 ANGULAR ± 1/2°</p> <p>FRACTION ± 1/32</p> <p>1. MACHINE FINISH: 63/RMS 2. BREAK ALL SHARP EDGES .003 MAX. 3. MACHINED FILLETS .005 MAX. 4. MACHINED SURFACES SQUARE TO RESPECTIVE AXIS WITHIN .005 INCHES PER INCH .005 T.I.R. 5. MACHINED DIAMETERS CONCENTRIC WITHIN .005 T.I.R. 6. DIMENSIONS TO BE MET BEFORE PLATING. 7. CHAMFER ALL THREADS 45°. 8. THREADS PER H-2B. 9. REMOVE FRAYED EDGES ON TEFLON. 10. REMOVE ALL BURRS.</p>	<table border="1"> <thead> <tr> <th>APPROVAL INITIALS</th> <th>DATE</th> </tr> </thead> <tbody> <tr> <td>RDH</td> <td>06.25.97</td> </tr> </tbody> </table>	APPROVAL INITIALS	DATE	RDH	06.25.97	<p>Amphenol CDI</p> <p>12900 Alondra Blvd. Cerritos, CA 90703</p>	<p>12900 Alondra Blvd. Cerritos, CA 90703</p>
WORK STD	PROD INST	ASSY INST													
NA	NA	NA													
APPROVAL INITIALS	DATE														
RDH	06.25.97														
				<p>TITLE</p> <p>SMP MALE STRAIGHT TO SMP MALE, STAIGHT ADAPTER</p>											
				<p>SCALE</p> <p>NONE</p>	<p>SHEET 1 of 3</p>										
				<p>DESIGN ENGG JCB 03.26.07</p>											
				<p>MFG ENGG</p>											
				<p>ECO APPRV DNg 12.02.24</p>											
				<p>SIZE CAGE CODE DRAWING NO.</p> <p>C 30990 P916</p>											
					<p>REV. F</p>										

NOTICE

THIS DRAWING EMBODIES A CONFIDENTIAL PROPRIETARY DESIGN ORIGINATED BY Amphenol CDI AND ALL DESIGN, MANUFACTURING, RE-PRODUCTION, USE AND SALE RIGHTS REGARDING THE SAME ARE EXPRESSLY RESERVED. IF IT IS SUBMITTED UNDER A CONFIDENTIAL RELATIONSHIP FOR A SPECIFIC PURPOSE AND THE RECIPIENT AGREES BY ACCEPTING THIS DRAWING NOT TO SUPPLY OR DISCLOSE ANY INFORMATION REGARDING IT TO ANY UNAUTHORIZED PERSON TO INCORPORATE IN OTHER PROJECTS ANY SPECIAL FEATURE REGULAR TO THIS DESIGN, ALL PATENT RIGHTS HERETO ARE EXPRESSLY RESERVED BY Amphenol CDI, Cerritos, CA 90703

4

3

2

1

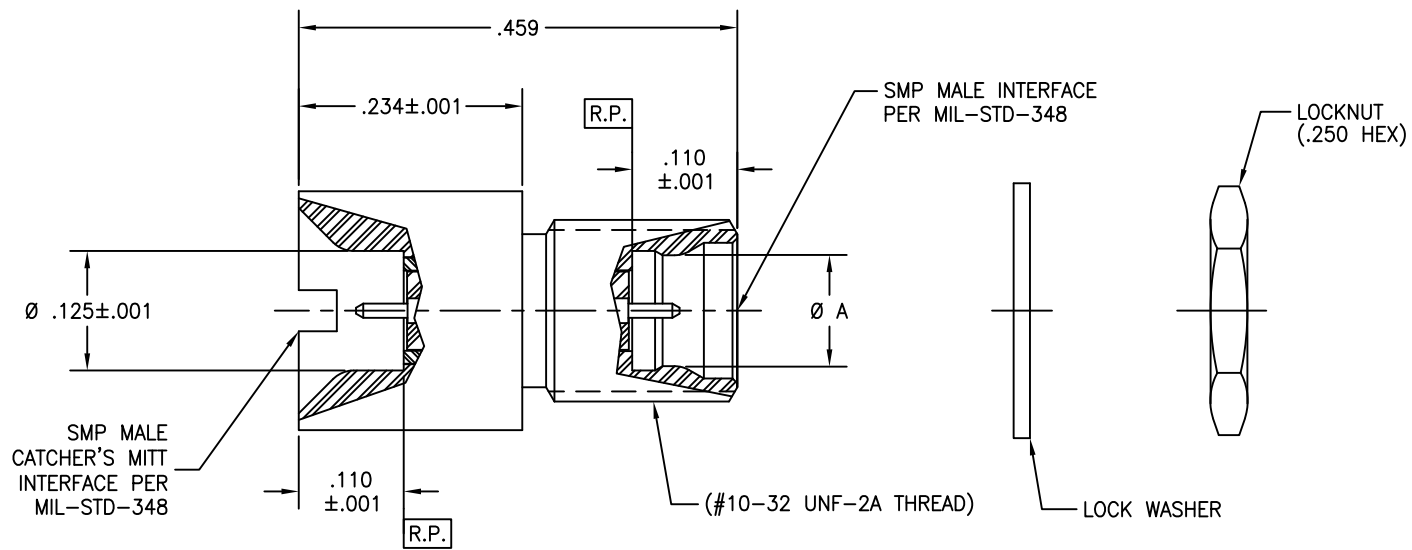


FIGURE 1

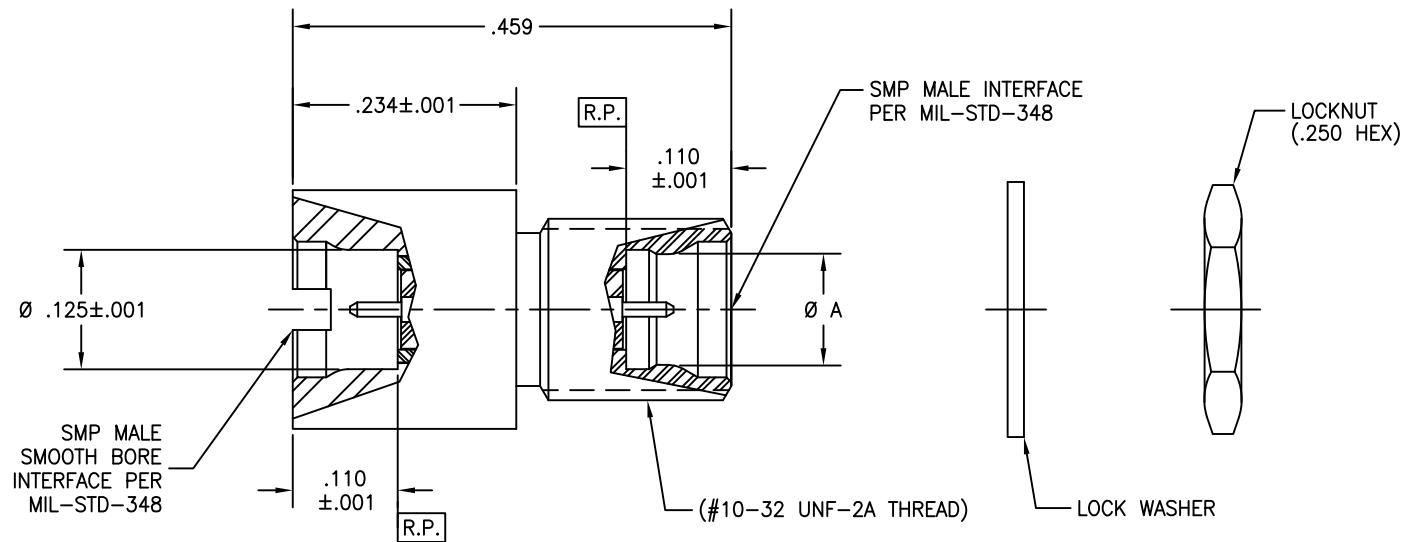


FIGURE 2

SCALE	5:1	DIRECTORY\SUB-DIRECTORY	_OUTLINE\	SHEET 2 OF 3
SIZE	C	CAGE CODE	30990	DRAWING NO.
			P916	REV. F

4

3

2

1

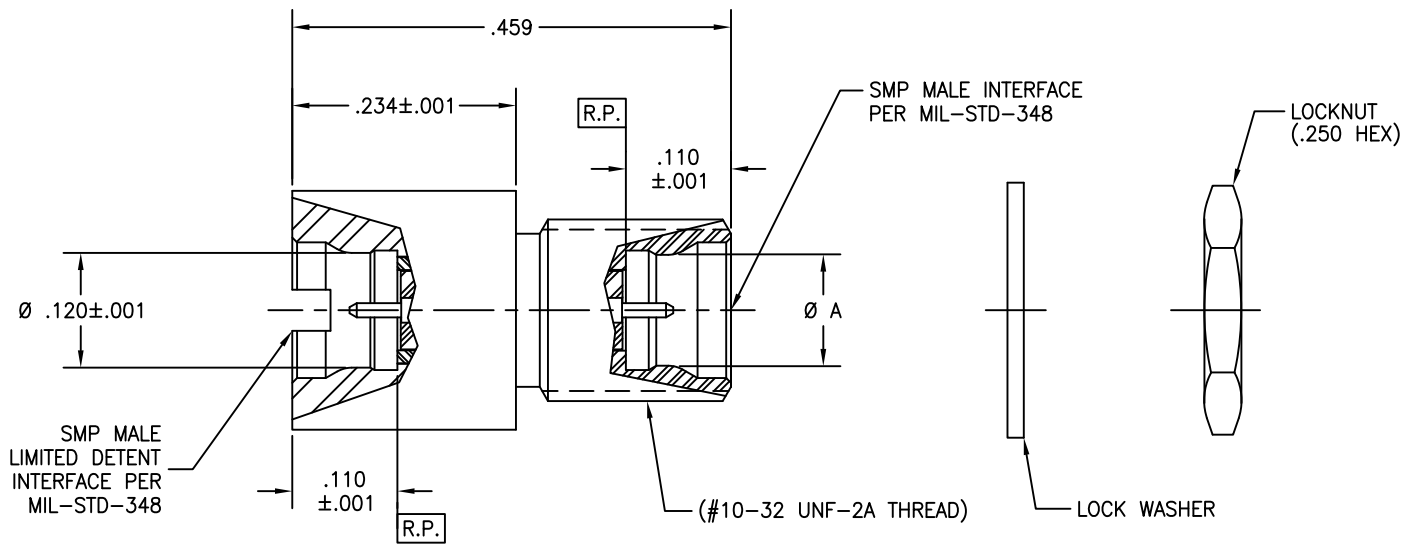


FIGURE 3

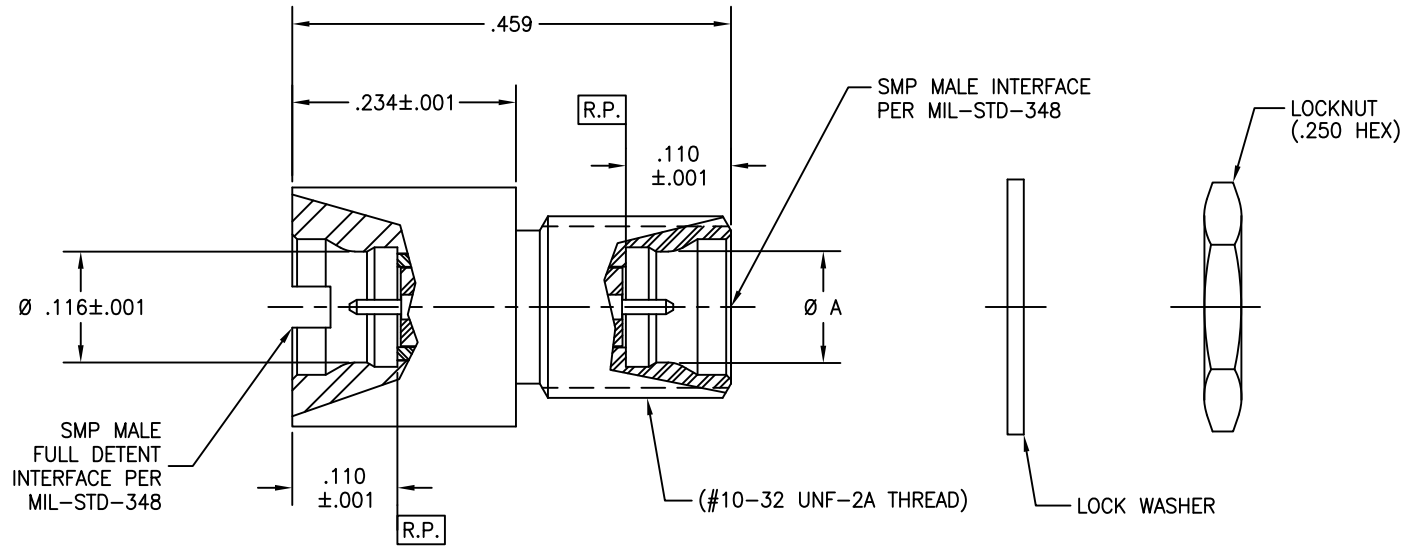


FIGURE 4

SCALE	DIRECTORY\SUB-DIRECTORY	SHEET 3 of 3
5:1	_OUTLINE\	
SIZE	CASE CODE	DRAWING NO.
C	30990	P916
		REV.
		F

4

3

2

1