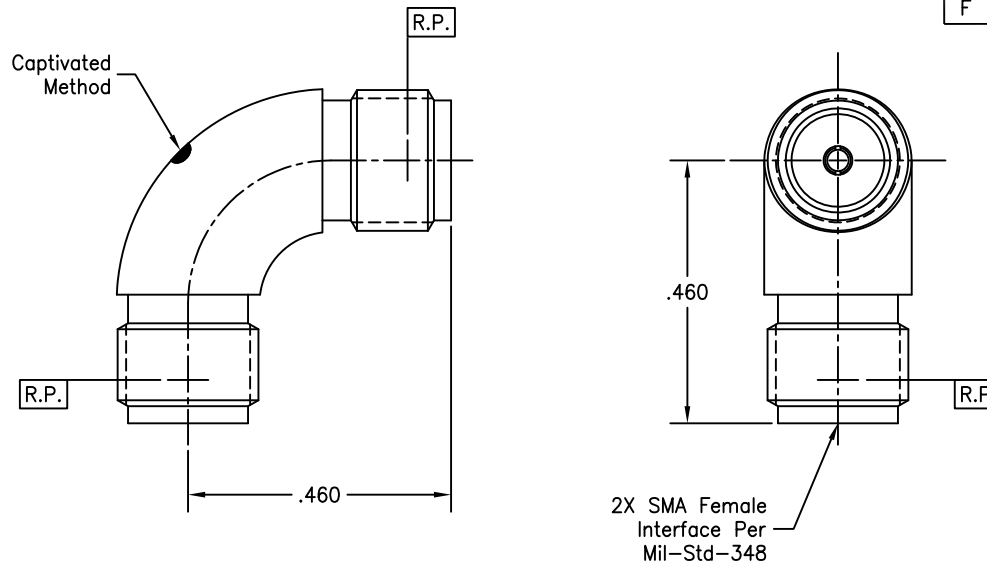


P/N	CAPTIVATION METHOD
BASIC	NONE
CC	EPOXY ONLY
SF	NONE
CCSF	EPOXY ONLY
CCCE	EPOXY WITH CONDUCTIVE
CCCESF	EPOXY WITH CONDUCTIVE

REVISIONS			
REV	DESCRIPTION	DATE	BY
D	ECO 26011	07.25.12	DKN
E	ECO 27338	10.16.13	DKN
F	ECO 202420 (ADD NEW NAME)	12.03.24	DKN



MATERIAL(S):	ELECTRICAL(S):	MECHANICAL(S):	ENVIRONMENTAL(S):
Body: 304 sst per SAE-AMS-5567. Center Conductor: BeCu alloy per ASTM B-196. Dielectric: PTFE per ASTM D-1710. Epoxy: Sigma VF type HV. Conductive Epoxy: Eccobond 56C.	Impedance: 50 Ohms nominal. Frequency Range: DC to 18.0 GHz. VSWR: 1.25:1 max @ 18GHz. Insertion Loss: .20 dB max @ 18GHz. Working Voltage: 335 Vrms max @ sea level. Dielectric Withstanding Voltage: 1,000 Vrms min. R.F. HiPot Voltage: 670 Vrms min @ 5MHz. Corona Level: 250 Vrms @ 70,000 ft. Insulation Resistance: 5000 MegOhms min. R.F. Leakage: -(65 - fGHz) dB (For CC & CCSF's). R.F. Leakage: -(90 - fGHz) dB (For BASIC & SF's). Contact Resistance: Before Environmental: Center Contact: 3.0 Milliohm max. Outer Contact: 2.0 Milliohm max. After Environmental: Center Contact: 4.0 Milliohm max. Outer Contact: NA.	Mating Characteristics: Interface per Mil-Std-348. Force To Engage & Disengage: Torque: 2 inch-pounds max. Longitudinal Force: NA. Connector Durability: 500 cycles min @ 12 cycles/minute max. Permeability: Less than 2.0 mu. Center Contact Captivation: **Axial Force: 6 pounds min. **Radial Torque: 4 inch-ounces min. ** Not applicable to Part No.'s 5095 & 5095SF.	Temperature Range: -65°C to +125°C (All Captivated) -65°C to +165°C (Basic & SF) Thermal Shock: Mil-Std-202, Method 107, Test Cond. A. Moisture Resistance: Mil-Std-202, Method 106, Insulation resistance at least 200 MegOhms within 5 minutes after removal from humidity. Corrosion: Mil-Std-202, Method 101, Test Cond. B. Vibration: Mil-Std-202, Method 204, Test Cond. D. Shock: Mil-Std-202, Method 213, Test Cond. I.

FINISH(ES):	APPLICABLE CARLISLE IT DOCUMENTS	TOLERANCES AND NOTES EXCEPT AS NOTED	MATERIAL	SPECIFICATION	PROCUREMENT										
Body: (For SF & CCSF's): Passivate per ASTM A-967. (For BASIC & CC's): Gold plate per ASTM B-488, type II, code C or D, class .25, over nickel underplate per SAE-AMS-QQ-290. Center Conductor: Gold plate per ASTM B-488, type II, code C or D, class 1.25, over nickel underplate per SAE-AMS-QQ-290.	<table border="1"> <thead> <tr> <th>WORK STD</th> <th>PROD INST</th> <th>ASSY INST</th> </tr> </thead> <tbody> <tr> <td>NA</td> <td>NA</td> <td>NA</td> </tr> </tbody> </table>	WORK STD	PROD INST	ASSY INST	NA	NA	NA	DIMENSIONS ARE IN INCHES. LINEAR .XX ±.015 .XXX ±.005 ANGULAR ± 1/2° FRACTION ± 1/32 .002 T.I.R. 1. MACHINE FINISH: 63/ RMS 2. BREAK ALL SHARP EDGES .005 MAX. 3. MACHINED FILLETS .005 MAX. 4. MACHINED SURFACES SQUARE TO RESPECTIVE AXES WITHIN .005 INCHES PER INCH. 5. MACHINED DIAMETERS CONCENTRIC WITHIN .002 T.I.R. 6. DIMENSIONS TO BE MET BEFORE PLATING. 7. CHAMFER ALL THREADS 45°. 8. THREADS PER 11-20. 9. REMOVE FRAZY EDGES ON TEFLON. 10. REMOVE ALL BURRS.	<table border="1"> <thead> <tr> <th>APPROVAL INITIALS</th> <th>DATE</th> </tr> </thead> <tbody> <tr> <td>JF</td> <td>11.12.04</td> </tr> </tbody> </table>	APPROVAL INITIALS	DATE	JF	11.12.04	CARLISLE Interconnect Technologies Ceritos, CA 90703	TITLE SMA FEMALE TO SMA FEMALE RADIUS RIGHT ANGLE ADAPTER SCALE 6:1 DIRECTORY\SUB-DIRECTORY _OUTLINE\ SHEET 1 OF 1 SIZE CAGE CODE DRAWING NO. 5095 REV. F
WORK STD	PROD INST	ASSY INST													
NA	NA	NA													
APPROVAL INITIALS	DATE														
JF	11.12.04														