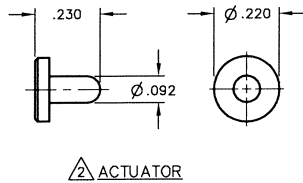
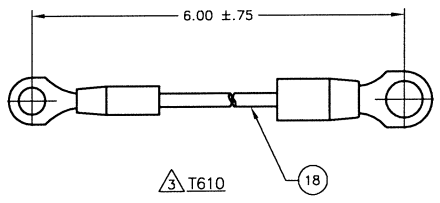
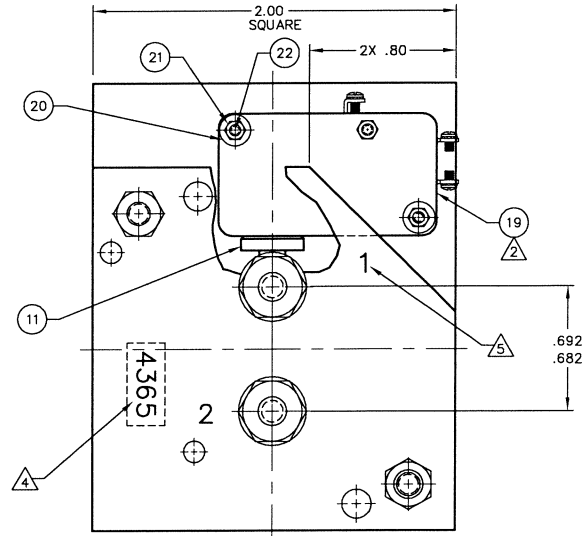
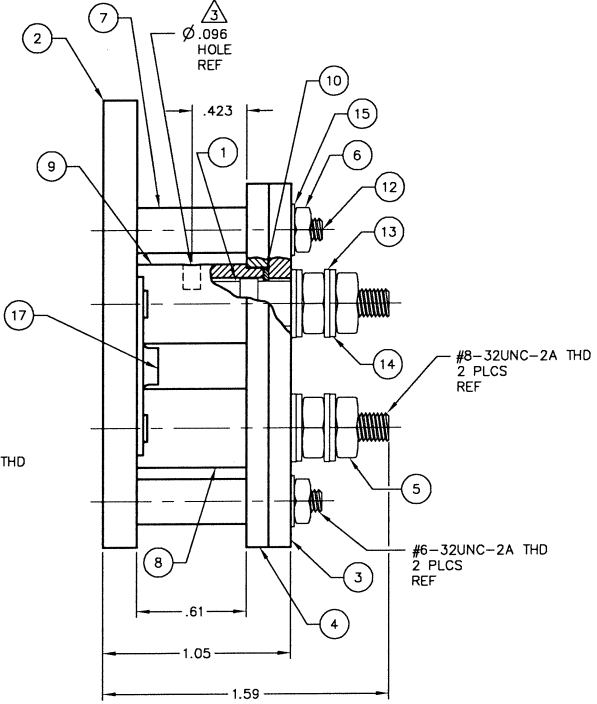
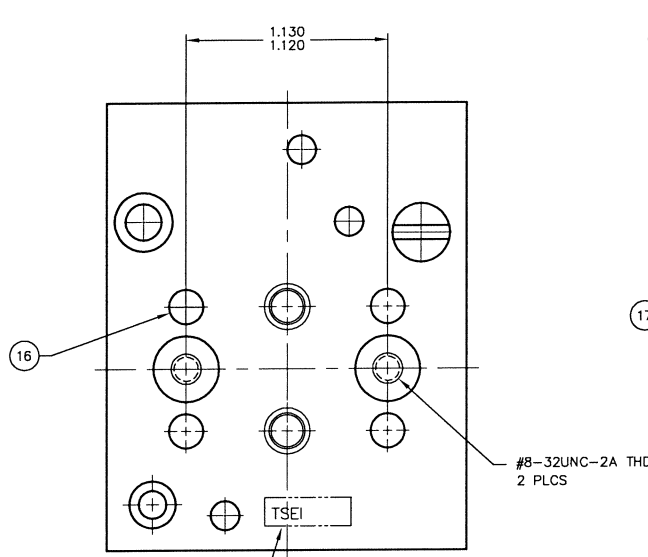


DRAWING NO. CBC-13303-4365		REV. 1	REV. F
REVISIONS			
NO.	REV.	DESCRIPTION	DATE
E		REVISED PER EO 15204	4-23-02
F		REVISED PER EO 23259	6-17-18

THIS DOCUMENT CONTAINS PROPRIETARY INFORMATION AND EXCEPT WITH WRITTEN PERMISSION OF TRI-STAR ELECTRONICS INT'L, INC. SUCH INFORMATION SHALL NOT BE DISCLOSED OR REPRODUCED IN ANY MANNER, OR USED FOR ANY PURPOSE, AND THE DOCUMENT SHALL NOT BE DUPLICATED IN WHOLE OR IN PART.



- ⑤ TERMINAL IDENTIFICATIONS.
- ④ MARK CUSTOMER PART NUMBER "4365" WHERE SHOWN.
- ③ ASSEMBLED SEPARATELY AND SUPPLIED WITH THE KIT AS T610.
- ② SWITCH AND ACTUATOR ARE INSTALLED IN THE CONNECTOR.
- ① PART MARKING: TSEI, LOT NO., DATE CODE, CAGE CODE "55104" AND PART NUMBER.

NOTES (UNLESS OTHERWISE SPECIFIED)

QTY	DESCRIPTION	REF. SPECIFICATION	QTY
2	MS21042-04	SCREW, FLAT, C.S.	22
2	MS21042-04	NUT, LOCK	21
2	AN960-4	WASHER, FLAT	20
1	MS25253-4	SWITCH, CV3-1001	19
1		WIRE ASSEMBLY (T610)	RA 873 (T & B P/N)
1			RA 853 (T & B P/N)
1			MIL-W-16878/4-18-9
2		PLATE, NUT, #8-32	17
4		RIVET	16
2		LOCKWASHER, #6-32	15
4		LOCKWASHER, #8-32	14
2		WASHER, #8-32	13
2		SCREW, #6-32 X 1.250L	12
1		ACTUATOR	11
4		WASHER, KEYING	10
1		BUSHING (WITH HOLE)	9
1		BUSHING (WITHOUT HOLE)	8
2		SPACER	7
2		NUT, #6-32	6
4		NUT, #8-32	5
1		PLATE, TOP, INNER	4
1		PLATE, TOP	3
1		PLATE, BASE	2
2		CONTACT, SOCKET, SIZE 5	1
			COPPER ALLOY

UNLESS OTHERWISE SPECIFIED, DIMENSIONS ARE IN INCHES. TOLERANCES ARE:		APPROVALS		DATE	FILE
ANGLES	±.001	BY	L. B. ODUCA	5-14-93	
DO NOT SCALE DRAWING		CHECKED	M. L. LEONOR	6-14-93	
MATERIAL		APPROVED	F. M. ACOSTA JR	6-14-93	
TREATMENT		APPROVED	F. M. ACOSTA JR	6-14-93	
FINISH					
NEXT ARMY	USED ON	NORDSKOG 4365		TRI-STAR ELECTRONICS INT'L, INC. 2201 ROSECRANS AVE., EL SEGUNDO, CA 90245 CONNECTOR ASSEMBLY BUFFET	
APPLICATION		D55104		CBC-13303-4365	
		SCALE NONE		REV. F	
		CAGE CODE CBC133343		DRAWING NO. CBC133343	