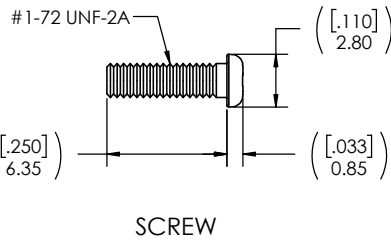
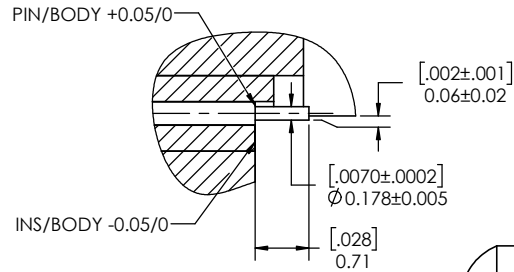
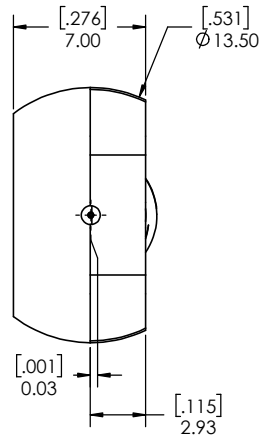


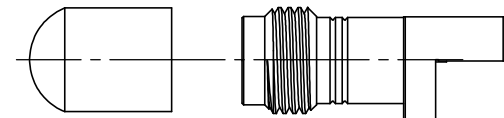
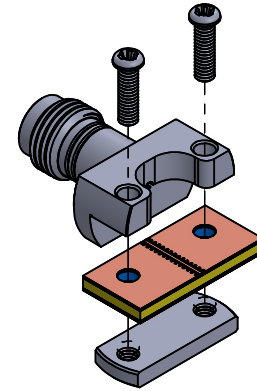
LOCKING BLOCK



SCREW



SECTION A-A  
SCALE 20 : 1



PROTECTION CAP

REVISIONS			
REV.	DESCRIPTION	DATE	APPROVED
-	INITIAL RELEASE	07/03/2018	MM
1	UPDATED PART NUMBER	10/24/2018	DL
2	ADDED SHEET 2 PCB DEFINITION	2/20/2019	PV
3	ADDED SECTION VIEW	3/7/2019	PV
4	ADDED SHEET 3	3/19/2019	PV
5	REVISED MODEL	11/19/2019	PV
6	ADD MISSING DIM.	6/24/2020	FY
7	FOOT PRINT UPDATED	1/24/2021	FY
8	ADD DIMENSION 0.06±0.02	9/3/2021	FY
9	REVISED TOLERANCE IN SECTION A	9/8/2021	JZ
10	ADD MOUNTING SREWS INFO TO TABLE	9/15/2021	JZ

- NOTE(S):  
 1. These characteristics are typical and for reference.  
 2. See sheets 2 and 3 for PCB definition.  
 3. For questions please contact sales@amphenolcdi.com

MATERIAL(S):

Body: Stainless Steel  
 Center Conductor: Beryllium Copper  
 Insulator: Insulator 1: PCTFE, white  
 Insulator 2: PTFE, white  
 RoHS Compliant  
 Protective Cap: Soft PVC  
 Color: Blue

Mouting Srews: Stainless Steel

ELECTRICAL(S):

Impedence: 50 Ohms Nominal  
 Frequency Range: DC to 50 GHz  
 VSWR: 1.3:1 max at 50 GHz  
 Working Voltage: 400 Vrms max @ Sea Level  
 Dielectric Withstand Voltage: 500 Vrms max.  
 Insulation Resistance: 5000 Megaohms min.  
 Contact Resistance: Initial:  
 Center Contact: 1.5 Milliohms max  
 Outer Contact: 0.8 Milliohms max

MECHANICAL(S):

Mating Characteristics:  
 Interface per MIL-STD-348  
 Force to Engage & Disengage:  
 Torque: 2 inch-pounds max  
 Longitudinal Force: NA  
 Connector Durability:  
 500 Cycles min.  
 Permeability: Less than 2.0 mu.  
 Center Contact Retention:  
 Axial Force: 6 pounds min.  
 Radial Force: NA

ENVIRONMENTAL(S):

Temperature Range: -55°C to +120°C  
 Moisture Resistance:  
 MIL-STD-202, Method 103, Test Condition B  
 Corrosion:  
 MIL-STD-202, Method 101, Test Condition B  
 Vibration:  
 MIL-STD-202, Method 204, Test Condition A  
 Shock:  
 MIL-STD-202, Method 213, Test Condition 1

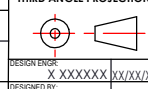
FINISH(ES):

Body: Passivated  
 Center Conductor: Gold Plating  
 Mouting Srews: Passivated

DIMENSIONS ARE IN MILLIMETERS [INCHES]  
 ± TOLERANCES UNLESS OTHERWISE NOTED

.X	.XX	.XXX	.XXXX	ANGLE
0.3mm [.012"]	0.15mm [.006"]	0.050mm [.002"]	0.010mm [.0004"]	0.5

THIRD ANGLE PROJECTION



TITLE  
 2.40mm STRAIGHT JACK, EDGE MOUNT (SOLDERLESS)

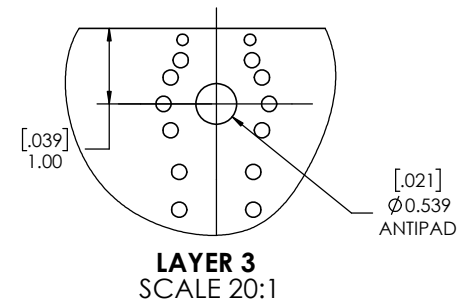
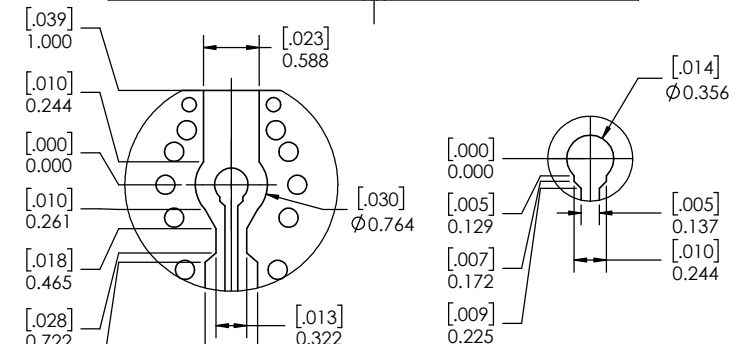
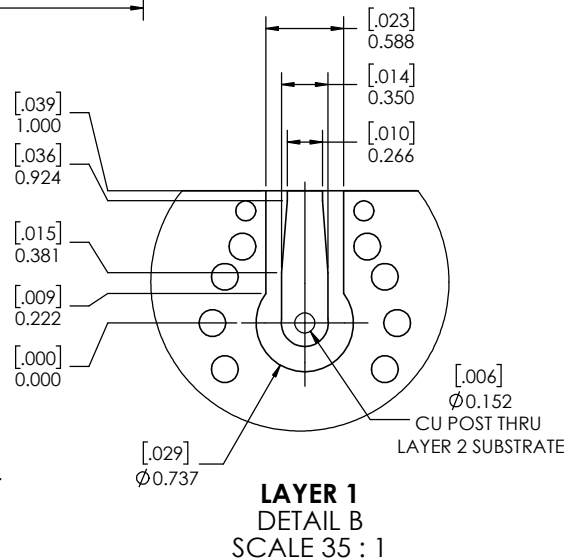
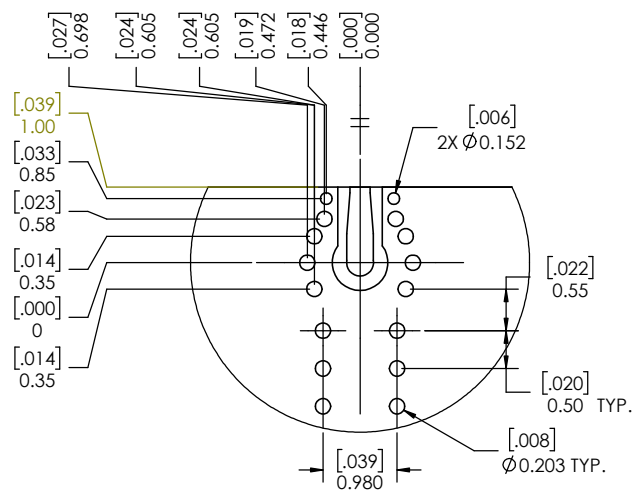
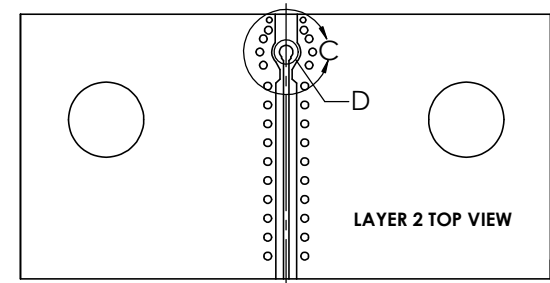
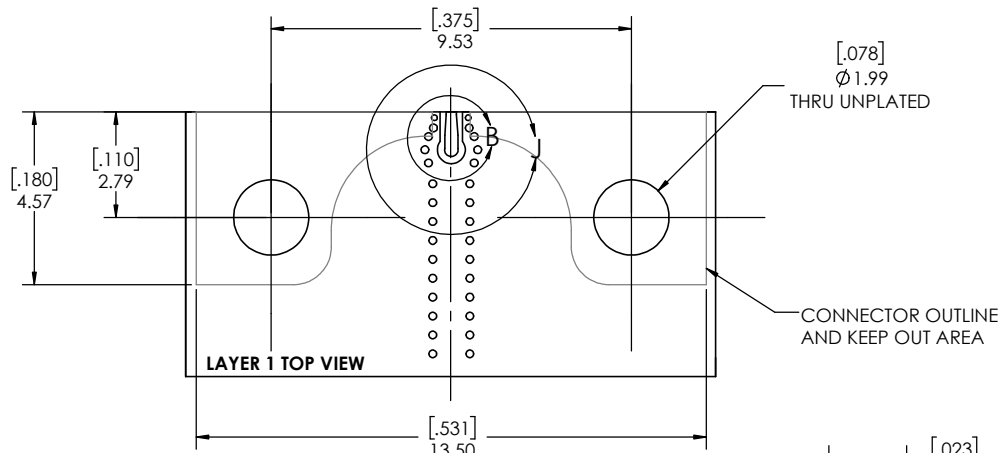
THE INFORMATION CONTAINED HEREIN IS PROPRIETARY TO AMPHENOL, AND SHALL IN NO WAY BE REPRODUCED OR DISCLOSED IN WHOLE OR IN PART OR USED FOR ANY DESIGN OR MANUFACTURE EXCEPT WHEN SUCH USER POSSESSES DIRECT, WRITTEN AUTHORIZATION FROM AMPHENOL.



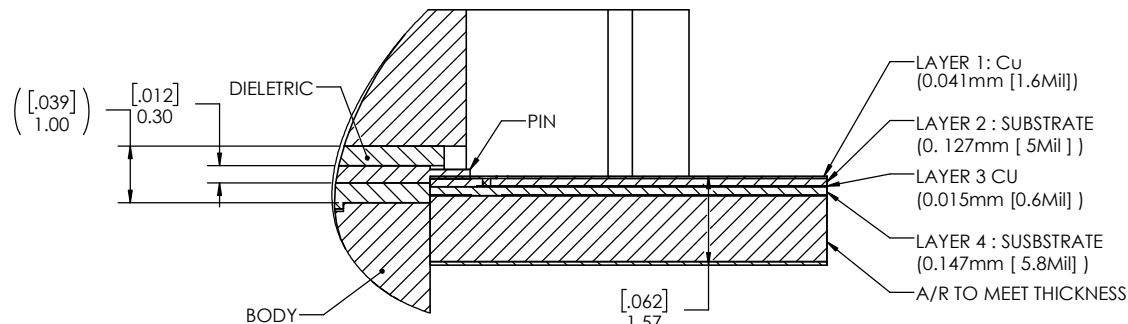
DESIGNED BY: X XXXXXX XX/XX/XXX	DESIGNED BY: X XXXXXX XX/XX/XXX
PRODUCT:	QUALITY:
NEXT ASSY.	USED ON
APPLICATION	

SIZE: C	CAGE CODE: 7M294	PART NUMBER: TMB-E4F2-1L1	REV: 10
SCALE: 5:1		DO NOT SCALE DRAWING	

SCALE: 5:1	DO NOT SCALE DRAWING	1 OF 3
------------	----------------------	--------



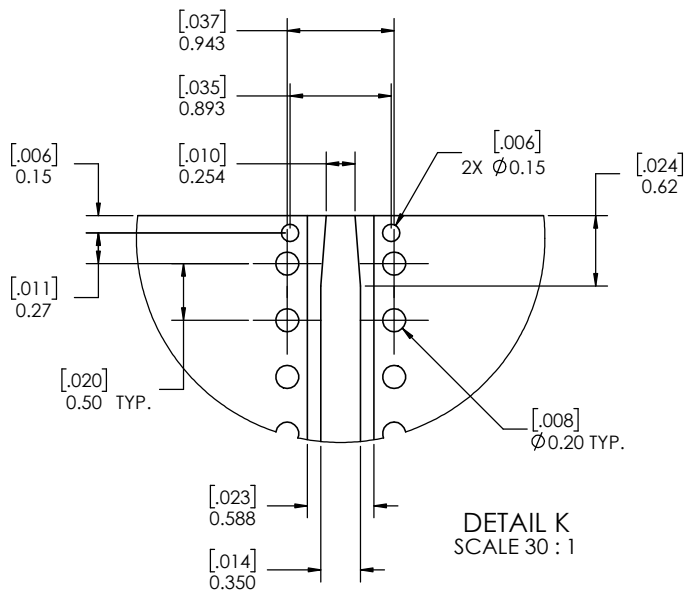
**FOOTPRINT OF STRIPLINE  
(REF ONLY)**



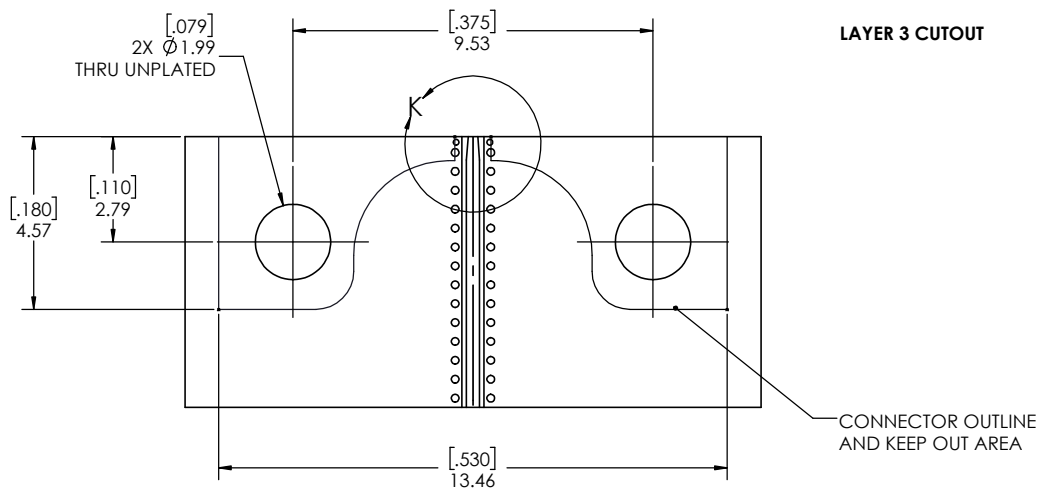
**Amphenol** *CDI*

2.40mm STRAIGHT JACK,  
EDGE MOUNT (SOLDERLESS)

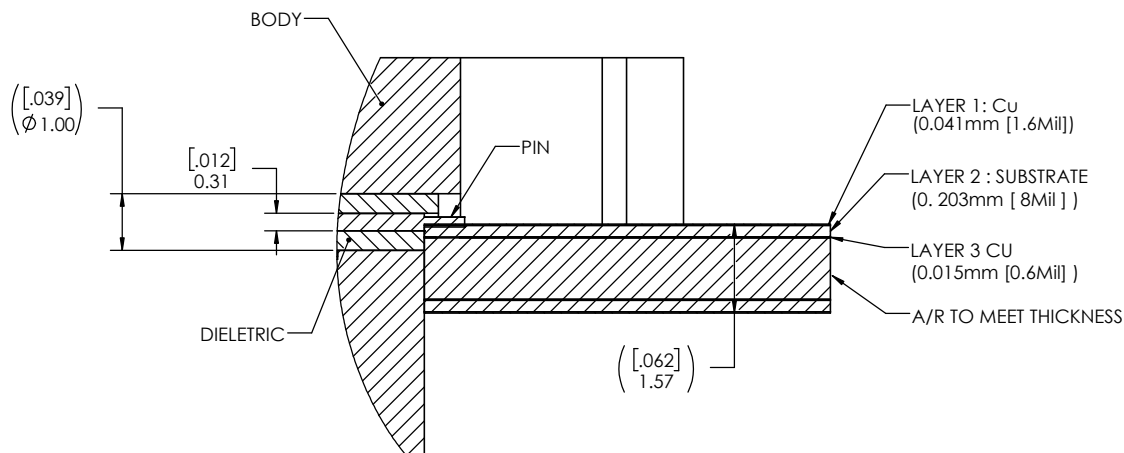
SIZE <b>C</b>	CAGE CODE <b>7M294</b>	PART NUMBER <b>TMB-E4F2-1L1</b>	REV <b>10</b>
SCALE: 10:1		PART NUMBER:TMB-E4F2-1L1 2 OF 3	



DETAIL K  
SCALE 30 : 1



LAYER 3 CUTOUT



FOOTPRINT OF CPW  
(REF ONLY)