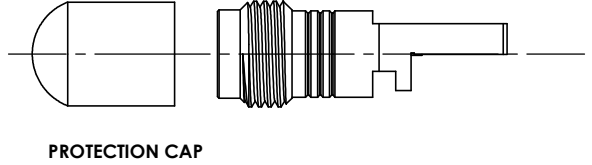
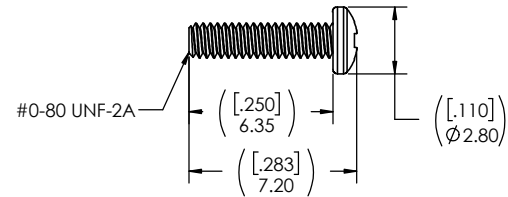
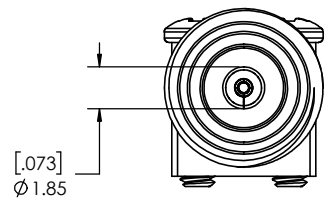
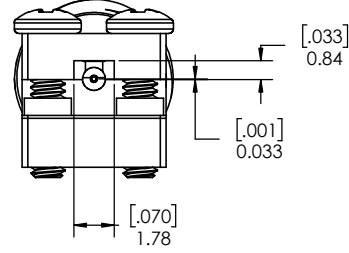
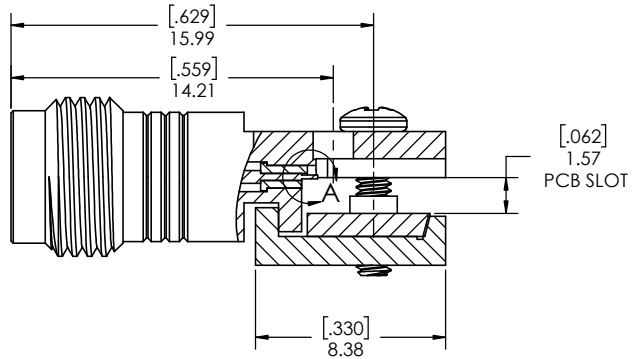
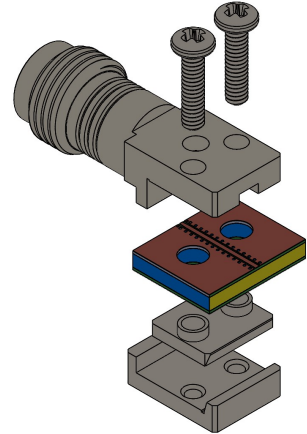
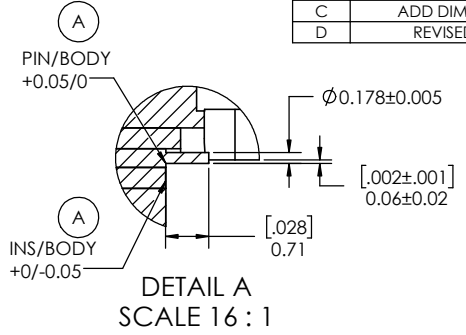
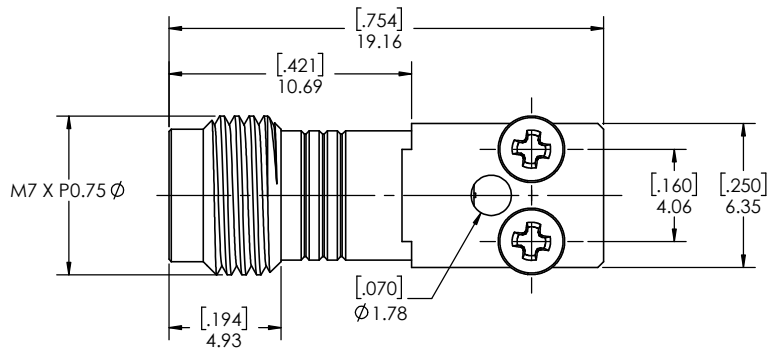


REVISIONS			
REV.	DESCRIPTION	DATE	DWN
-	INITIAL RELEASE	10/29/2020	FY
A	ADD MISSING DIMENSION	12/3/2020	FY
B	UPDATE FOOTPRINT	1/14/2021	FY
C	ADD DIMENSION 0.06mm	9/2/2021	FY
D	REVISED DIMENSIONS	9/8/2021	JZ



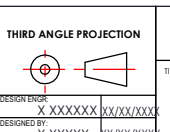
- NOTE(S):
1. These characteristics are typical and for reference.
  2. For questions please contact sales@amphenolcdi.com
  3. See sheet 2 for PCB interface definition.

MATERIAL(S) :	ELECTRICAL(S) :	MECHANICAL(S) :	ENVIRONMENTAL(S) :
<b>Body/Screws:</b> Stainless Steel <b>Locking Block:</b> Brass <b>Center Conductor:</b> Beryllium Copper <b>Insulator:</b> PTFE, white PTFE, WHITE RoHS Compliant	<b>Protective Cap:</b> Soft PVC Color: Green  Impedence: 50 Ohms Nominal Frequency Range: DC to 67 GHz VSWR: 1.30 max at 67 GHz Working Voltage: 500 V RMS max @ Sea Level Dielectric Withstand Voltage: 500 V RMS max. Insulation Resistance: 5000 megaohms min. Contact Resistance: Initial: Center Contact: 3 Milliohms max Outer Contact: 2.5 Milliohms max	Mating Characteristics: Interface per MIL-STD-348 Force to Engage & Disengage: Torque: 2 inch-pounds max Longitudinal Force: NA Connector Durability: 500 Cycles min. Permeability: Less than 2.0 mu. Center Contact Retention: Axial Force: 6 pounds min. Radial Force: NA	Temperature Range: -55°C to +120°C Moisture Resistance: MIL-STD-202, Method 103, Test Condition B Corrosion: MIL-STD-202, Method 101, Test Condition B Vibration: MIL-STD-202, Method 204, Test Condition A Shock: MIL-STD-202, Method 213, Test Condition 1

FINISH(ES) :

Body/Screw:  
Passivated  
 Locking Block:  
Nickel plating  
 Center Conductor:  
BeCu ,Gold Plating

DIMENSIONS ARE IN MILLIMETERS [INCHES] ± TOLERANCES UNLESS OTHERWISE NOTED				
.X	.XX	.XXX	.XXXX	ANGLE
0.3mm [.012"]	0.15mm [.006"]	0.050mm [.002"]	0.010mm [.0004"]	0.5



**Amphenol CDI**

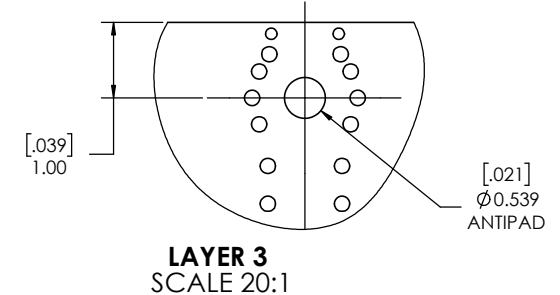
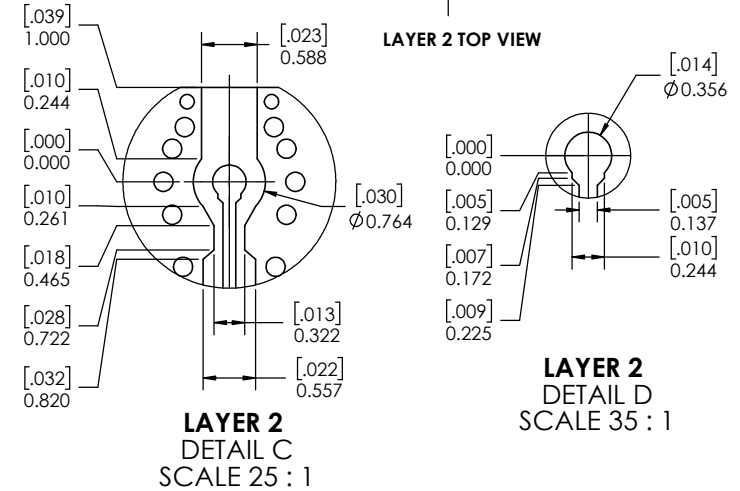
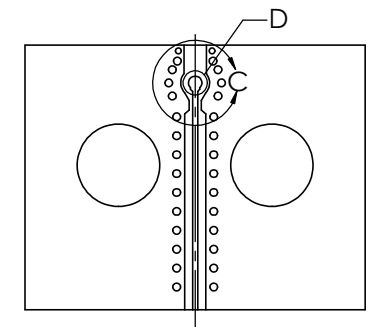
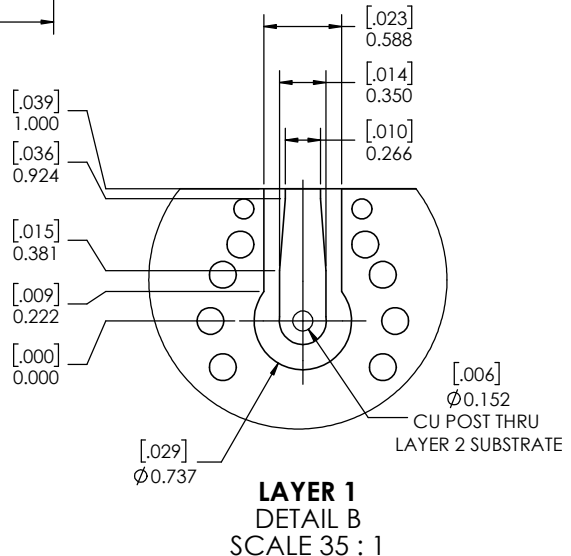
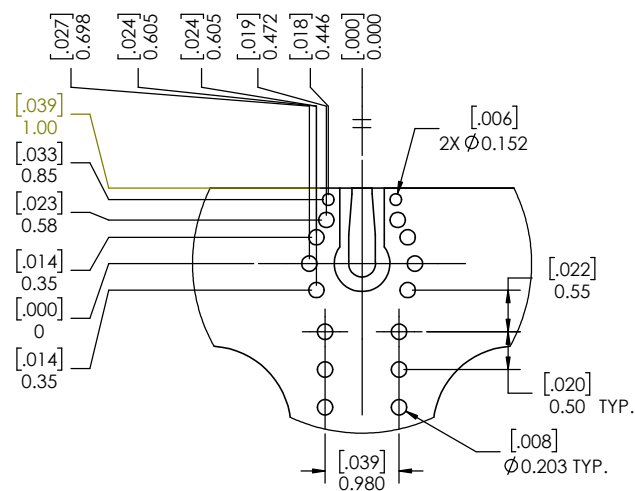
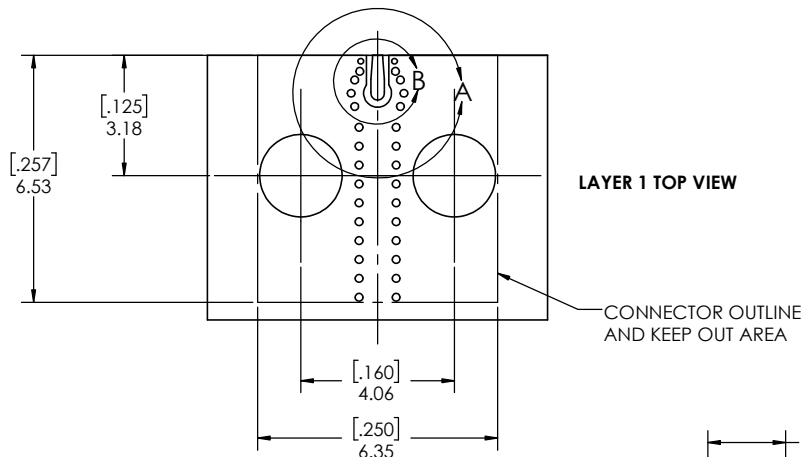
TITLE: Edge Launch, Narrow Body, Solderless, 1.85mm, Connector

THE INFORMATION CONTAINED HEREIN IS PROPRIETARY TO AMPHENOL, AND SHALL IN NO WAY BE REPRODUCED OR DISCLOSED IN WHOLE OR IN PART OR USED FOR ANY DESIGN OR MANUFACTURE EXCEPT WHEN SUCH USER POSSESSES DIRECT, WRITTEN AUTHORIZATION FROM AMPHENOL.

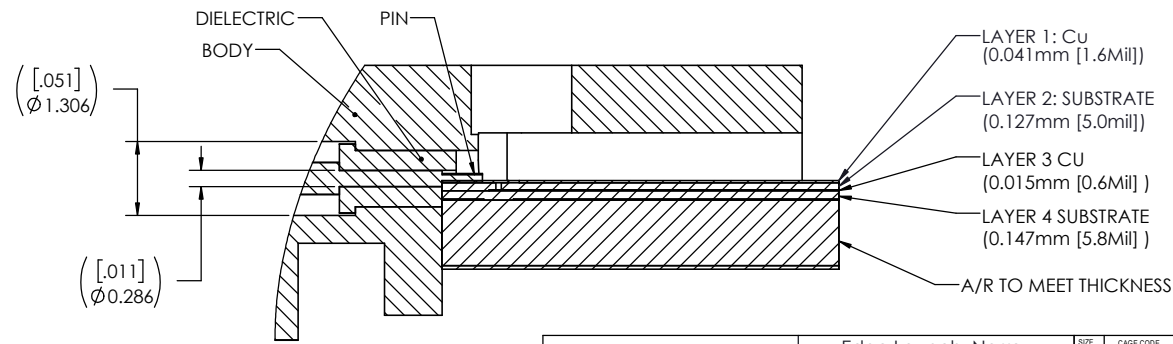


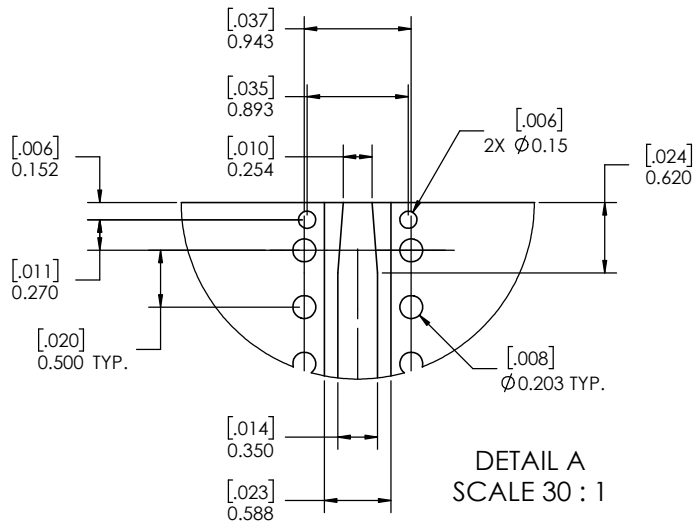
DESIGNED BY: X XXXXXX XX/XX/XXX	PRODUCT:	SIZE: C	CAGE CODE: 7M294
DESIGNED BY: X XXXXXX XX/XX/XXX	QUALITY:	PART NUMBER: TMB-E8F2-1L1-01	REV: D
DESIGNED BY: X XXXXXX XX/XX/XXX	MFG:	SCALE: 12:1	DO NOT SCALE DRAWING

APPLICATION	USED ON	1 OF 3
-------------	---------	--------

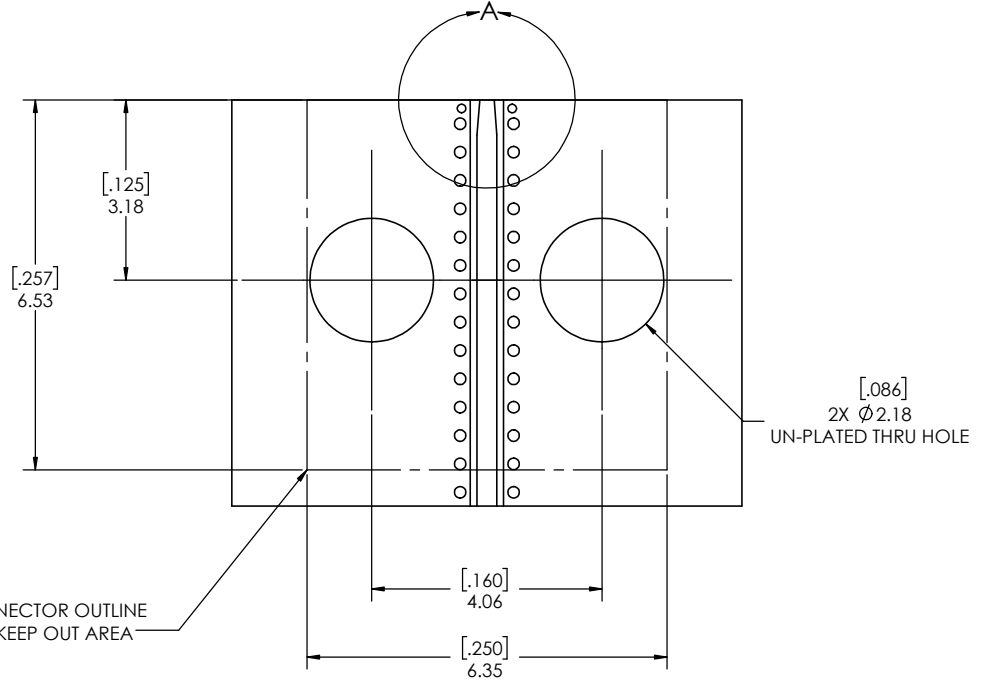


**FOOTPRINT OF STRIPLINE  
(REF ONLY)**

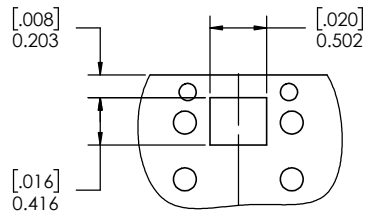




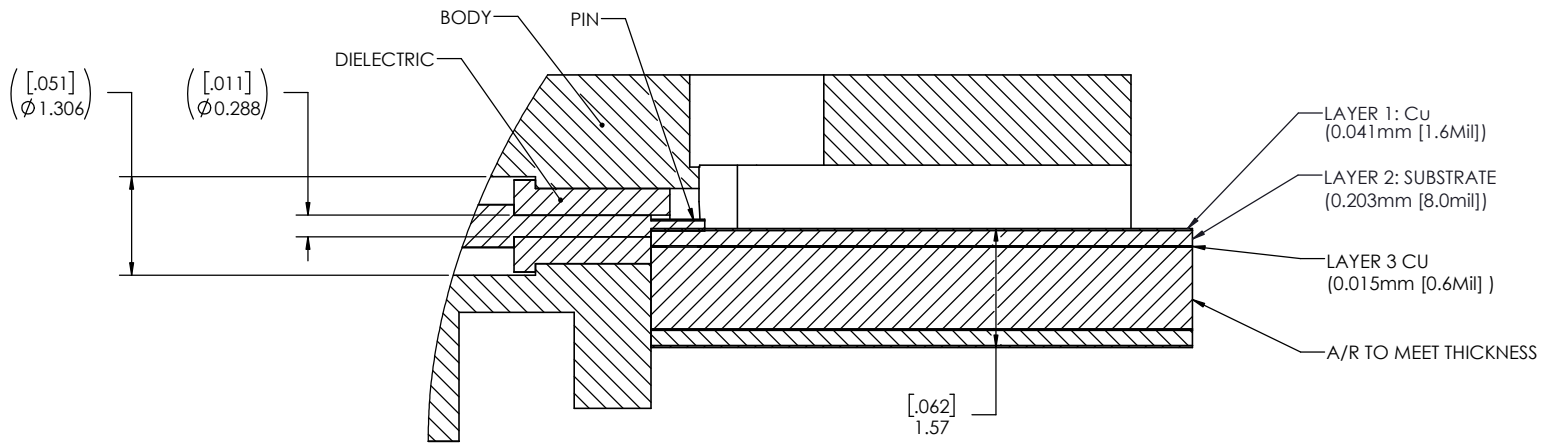
DETAIL A  
SCALE 30 : 1



CONNECTOR OUTLINE  
AND KEEP OUT AREA



LAYER 3 CUTOUT



FOOT PRINT OF CPW  
(REF ONLY)



Edge Launch, Narrow  
Body, Solderless, 1.85mm,  
Connector

SIZE <b>C</b>	CAGE CODE <b>7M294</b>	PART NUMBER <b>TMB-E8F2-1L1-01</b>	REV <b>D</b>
SCALE: 10:1		PART NUMBER: TMB-E8F2-1L1-01 3 OF 3	