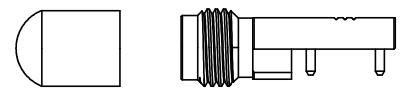
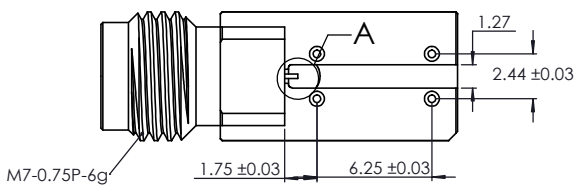
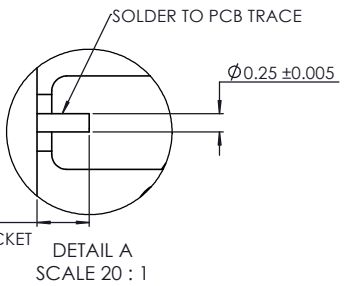
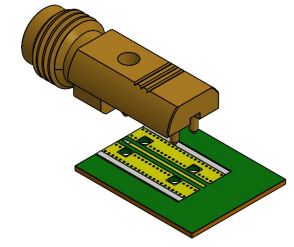
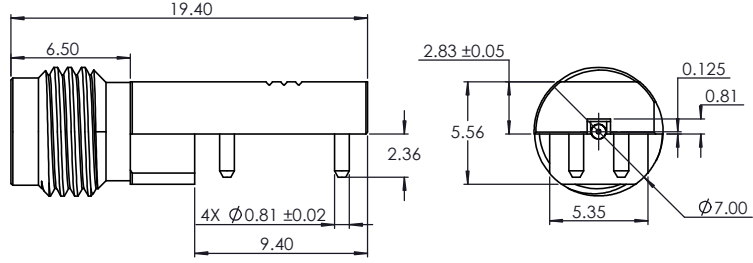
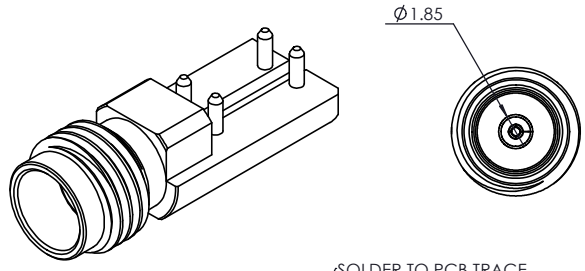
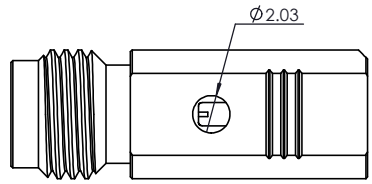
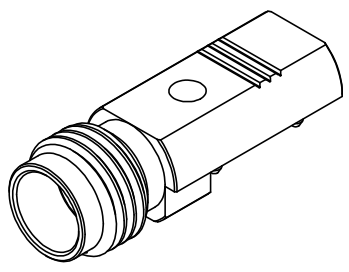


REV.	DESCRIPTION	DATE	BY
01	Adjust to green cap		James
02	Change temperature range		James
03	replace the page2		James



PROTECTIVE CAP

NOTE(S):  
 1. These characteristics are typical and for reference.  
 2. See sheet 2 for PCB definition.  
 3. For questions please contact sales@amphenolcdi.com

MATERIAL(S) :	ELECTRICAL(S) :	MECHANICAL(S) :	ENVIRONMENTAL(S) :
---------------	-----------------	-----------------	--------------------

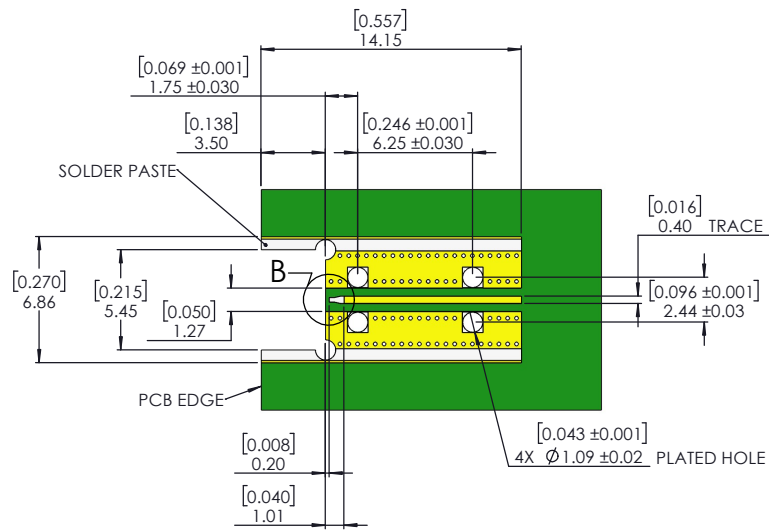
Body: BRASS C3604B Center Conductor: Beryllium Copper Insulator: Insulator : PTFE, white Protective Cap: Soft PVC Color: Green	Impedence: 50 Ohms Nominal Frequency Range: DC to 67 GHz VSWR: 1.3:1 max at 67 GHz Working Voltage: 400 Vrms max @ Sea Level Dielectric Withstand Voltage: 500 Vrms max. Insulation Resistance: 5000 Megohms min. Contact Resistance: Initial: Center Contact: 1.5 Milliohms max Outer Contact: 0.8 Milliohms max	Mating Characteristics: Interface per MIL-STD-348 Force to Engage & Disengage: Torque: 2 inch-pounds max Longitudinal Force: NA Connector Durability: 500 Cycles min. Permeability: Less than 2.0 mu. Center Contact Retention: Axial Force: 6 pounds min. Radial Force: NA	Temperature Range: -55 C to +120 C Moisture Resistance: MIL-STD-202, Method 103, Test Condition B Corrosion: MIL-STD-202, Method 101, Test Condition B Vibration: MIL-STD-202, Method 204, Test Condition A Shock: MIL-STD-202, Method 213, Test Condition 1
--	--	---	--

FINISH(ES)
------------

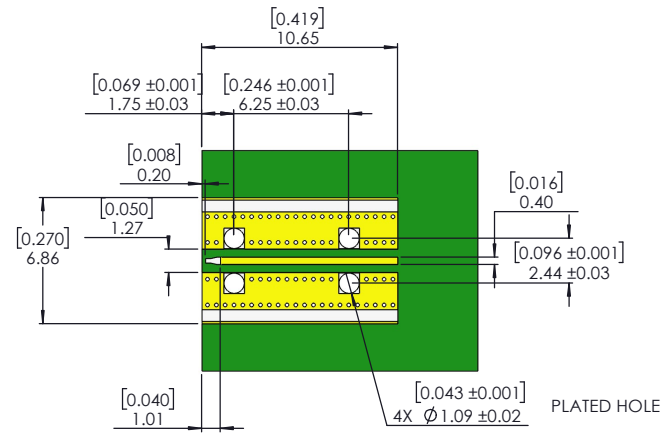
Body: Gold Plating Center Conductor: Gold Plating	<b>DIMENSIONS ARE IN MILLIMETERS [INCHES]</b> <b>± TOLERANCES UNLESS OTHERWISE NOTED</b>	<b>THIRD ANGLE PROJECTION</b>	<b>Amphenol CDI</b>										
	<table border="1"> <thead> <tr> <th>.X</th> <th>.XX</th> <th>.XXX</th> <th>.XXXX</th> <th>ANGLE</th> </tr> </thead> <tbody> <tr> <td>0.3mm [.012"]</td> <td>0.15mm [.006"]</td> <td>0.050mm [.002"]</td> <td>0.010mm [.0004"]</td> <td>0.5</td> </tr> </tbody> </table>	.X	.XX	.XXX	.XXXX	ANGLE	0.3mm [.012"]	0.15mm [.006"]	0.050mm [.002"]	0.010mm [.0004"]	0.5		<b>Amphenol CDI</b>
.X	.XX	.XXX	.XXXX	ANGLE									
0.3mm [.012"]	0.15mm [.006"]	0.050mm [.002"]	0.010mm [.0004"]	0.5									
		DESIGN ENGR: X XXXXXX DESIGNED BY: X XXXXXX PRODUCT: XX/XX/XXXX	<b>Amphenol CDI</b>										
		QUALITY:	<b>Amphenol CDI</b>										
		MFG:	<b>Amphenol CDI</b>										
	NEXT ASSY.      USED ON		<b>Amphenol CDI</b>										
	APPLICATION		<b>Amphenol CDI</b>										

THE INFORMATION CONTAINED HEREIN IS PROPRIETARY TO AMPHENOL AND SHALL IN NO WAY BE REPRODUCED OR DISCLOSED IN WHOLE OR IN PART OR USED FOR ANY DESIGN OR MANUFACTURE EXCEPT WHEN SUCH USER POSSESSES DIRECT, WRITTEN AUTHORIZATION FROM AMPHENOL.			<b>Amphenol CDI</b>
		TITLE: 1.85mm STR. JACK EDGE MOUNT (WITH FEET) , PCB CONNECTOR, WITH .010" PIN	<b>Amphenol CDI</b>
SIZE: C	CAGE CODE: 7M294	PART NUMBER: TMB-E8FS-1ST	REV: 03
SCALE: 2:1		DO NOT SCALE DRAWING	1 OF 2

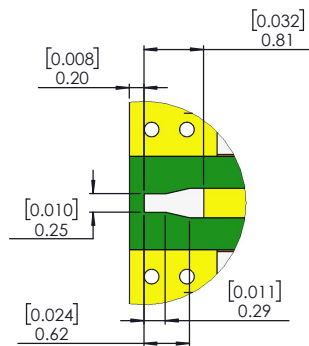
THE INFORMATION CONTAINED HEREIN IS PROPRIETARY TO AMPHENOL AND SHALL IN NO WAY BE REPRODUCED OR DISCLOSED IN WHOLE OR IN PART OR USED FOR ANY DESIGN OR MANUFACTURE EXCEPT WHEN SUCH USER POSSESSES DIRECT, WRITTEN AUTHORIZATION FROM AMPHENOL.			<b>Amphenol CDI</b>
		TITLE: 1.85mm STR. JACK EDGE MOUNT (WITH FEET) , PCB CONNECTOR, WITH .010" PIN	<b>Amphenol CDI</b>
SIZE: C	CAGE CODE: 7M294	PART NUMBER: TMB-E8FS-1ST	REV: 03
SCALE: 2:1		DO NOT SCALE DRAWING	1 OF 2



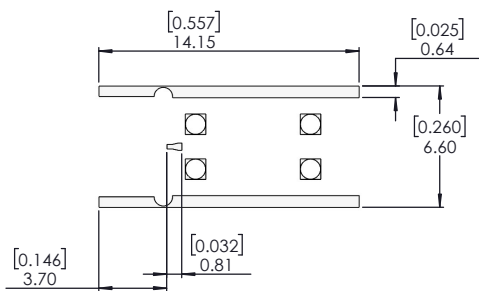
OPTION 1



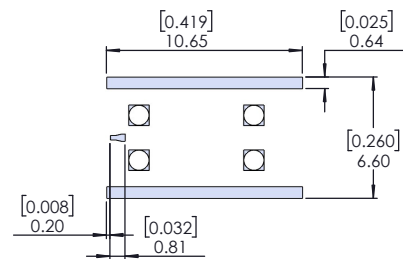
OPTION 2



DETAIL B  
SCALE 20 : 1




SOLDER STENCIL



SOLDER STENCIL

TMB-EXFS-1ST  
FOOT PRINT

Amphenol 	1.85mm STR. JACK EDGE MOUNT (WITH FEET) , PCB CONNECTOR, WITH .010" PIN		SIZE C	CAGE CODE 7M294	PART NUMBER TMB-E8FS-1ST	REV 03
	SCALE: 2:1		PART NUMBER: TMB-E8FS-1ST 2 OF 2			