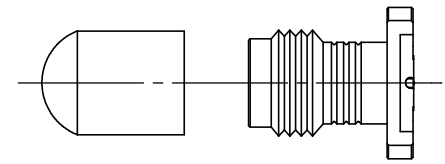
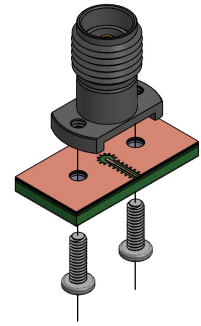
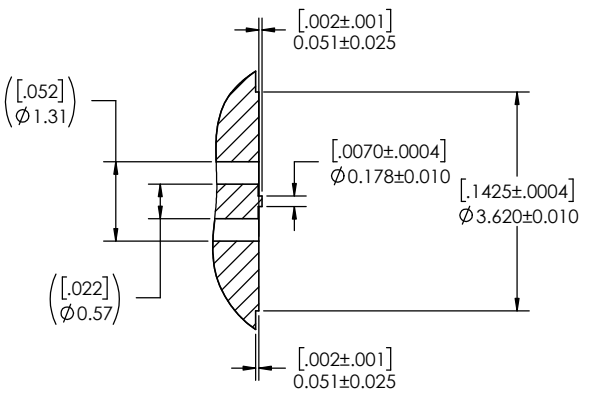
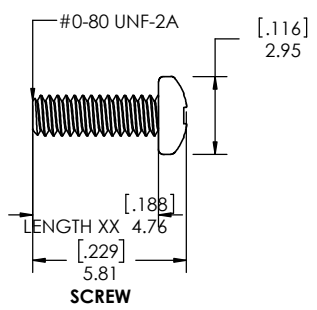
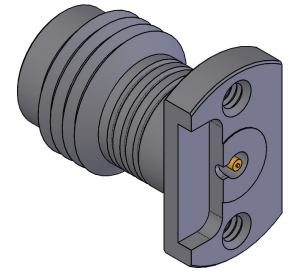
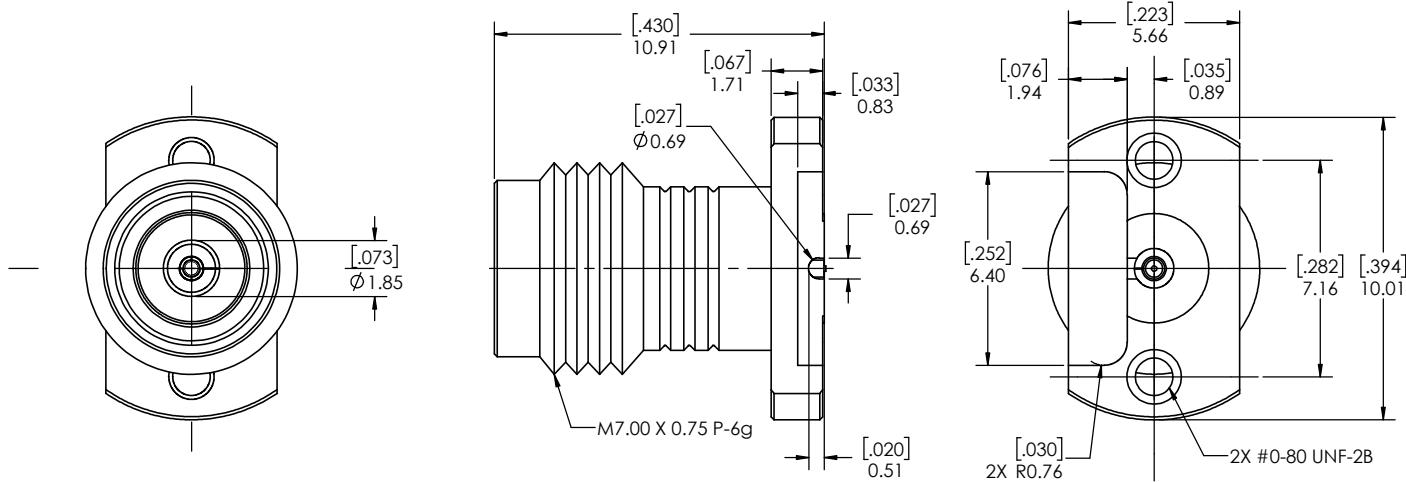


REVISIONS			
REV.	DESCRIPTION	DATE	APPROVED
0	INITIAL RELEASE	5/6/19	PV
1	UPD PCB (COMMON SL AND CPW)	5/13/2019	PV
2	CHANGED PN, WAS: TMB-V8F2-1LIC	1/9/2020	PV
3	CHANGED DIM	1/21/2020	PV
4	UPDATED TO 59-2X025-44050C	2/3/2020	PV
5	UPDATED TO 59-2X025-44050D	8/12/2020	FY
6	ADD MOUNTING SREWS INFO TO TABLE	9/15/2021	JZ



- NOTE(S):
1. These characteristics are typical and for reference
 2. See sheet 2 for PCB interface definition.
 3. For questions please contact sales@amphenolcdi.com

MATERIAL(S) :	ELECTRICAL(S) :	MECHANICAL(S) :	ENVIRONMENTAL(S) :
Body: Stainless Steel Center Conductor: Beryllium Copper Insulator: PCTFE, white RoHS Compliant Protective Cap: Soft PVC Color: Green Mounting Screws: Stainless Steel	Impedence: 50 Ohms Nominal Frequency Range: DC to 67 GHz VSWR: 1.30 max at 67 GHz Working Voltage: 500 V RMS max @ Sea Level Dielectric Withstand Voltage: 1000 V RMS max. Insulation Resistance: 5000 megohms min. Contact Resistance: Initial: Center Contact: 3 Milliohms max Outer Contact: 2.5 Milliohms max Insertion Loss: <0.49 db @ 67 GHz	Mating Characteristics: Interface per MIL-STD-348 Force to Engage & Disengage: Torque: 2 inch-pounds max Longitudinal Force: NA Connector Durability: 500 Cycles min. Permeability: Less than 2.0 μ . Center Contact Retention: Axial Force: 6 pounds min. Radial Force: NA	Temperature Range: -55°C to +85°C Moisture Resistance: MIL-STD-202, Method 103, Test Condition B Corrosion: MIL-STD-202, Method 101, Test Condition B Vibration: MIL-STD-202, Method 204, Test Condition A Shock: MIL-STD-202, Method 213, Test Condition 1

FINISH(ES) :

Body: Passivated
 Center Conductor: Gold Plating
 Mounting Screws: Passivated

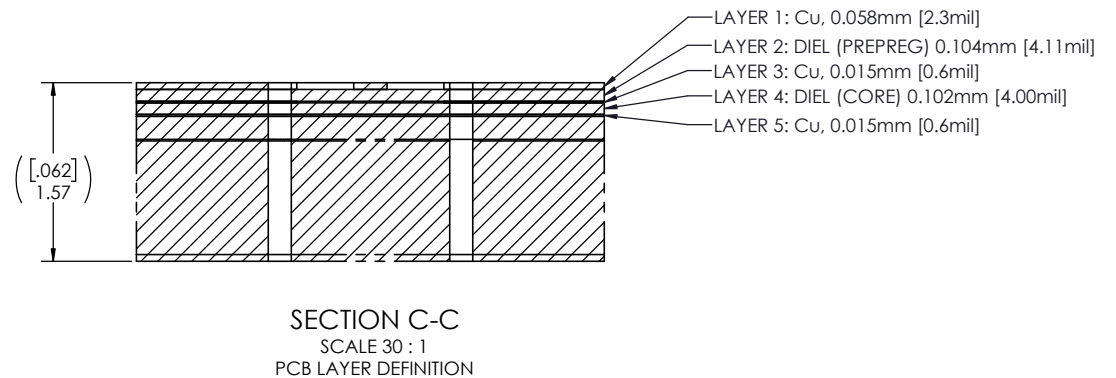
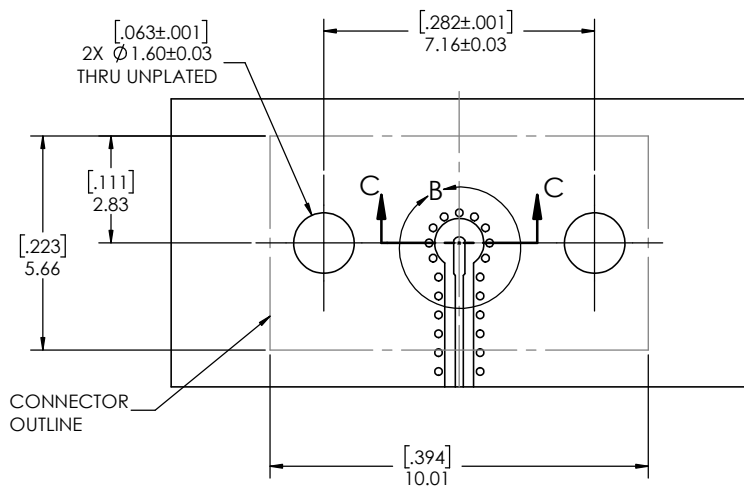
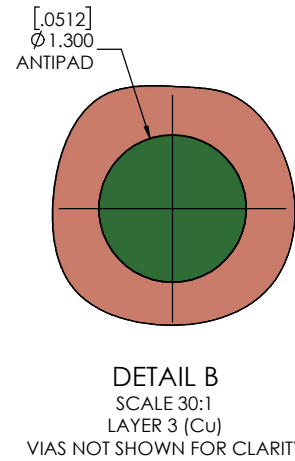
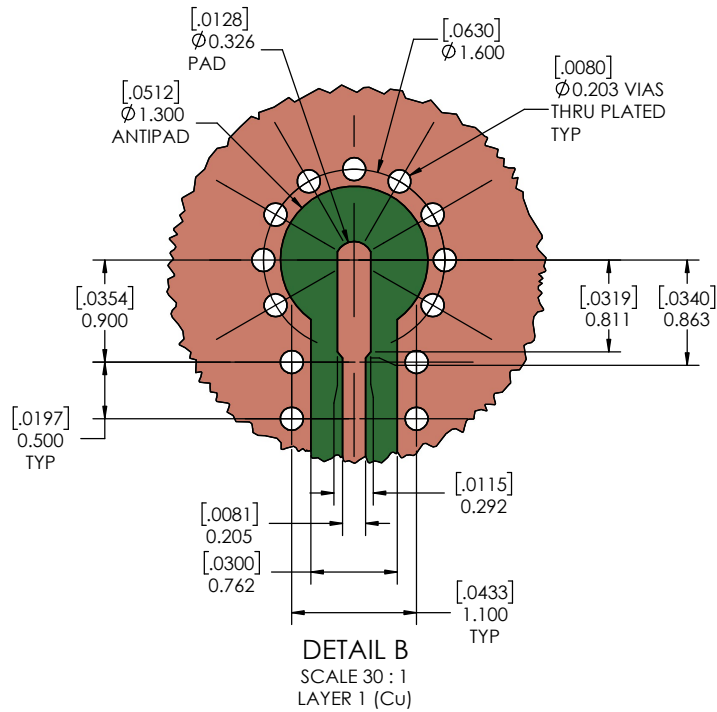
Amphenol CDI

1.85mm FEMALE 2 HOLE FLANGE POST CONTACT, CPW

DIMENSIONS ARE IN MILLIMETERS [INCHES] ± TOLERANCES UNLESS OTHERWISE NOTED					THIRD ANGLE PROJECTION		TITLE 1.85mm FEMALE 2 HOLE FLANGE POST CONTACT, CPW
.X 0.3mm [.012"]	.XX 0.15mm [.006"]	.XXX 0.050mm [.002"]	.XXXX 0.010mm [.0004"]	ANGLE 0.5			
NEXT ASSY.					USED ON		PART NUMBER TMB-V8F2-3LC
APPLICATION					SCALE: 8:1 DO NOT SCALE DRAWING		REV 6

THE INFORMATION CONTAINED HEREIN IS PROPRIETARY TO AMPHENOL, AND SHALL IN NO WAY BE REPRODUCED OR DISCLOSED IN WHOLE OR IN PART OR USED FOR ANY DESIGN OR MANUFACTURE EXCEPT WHEN SUCH USER POSSESSES DIRECT, WRITTEN AUTHORIZATION FROM AMPHENOL.





PCB LAYOUT
(FOR REFERENCE ONLY)



1.85mm FEMALE 2 HOLE
FLANGE POST CONTACT,
CPW

SIZE C	CAGE CODE 7M294	PART NUMBER TMB-V8F2-3LC	REV 6
SCALE: 10:1		PART NUMBER: TMB-V8F2-3LC 2 OF 2	