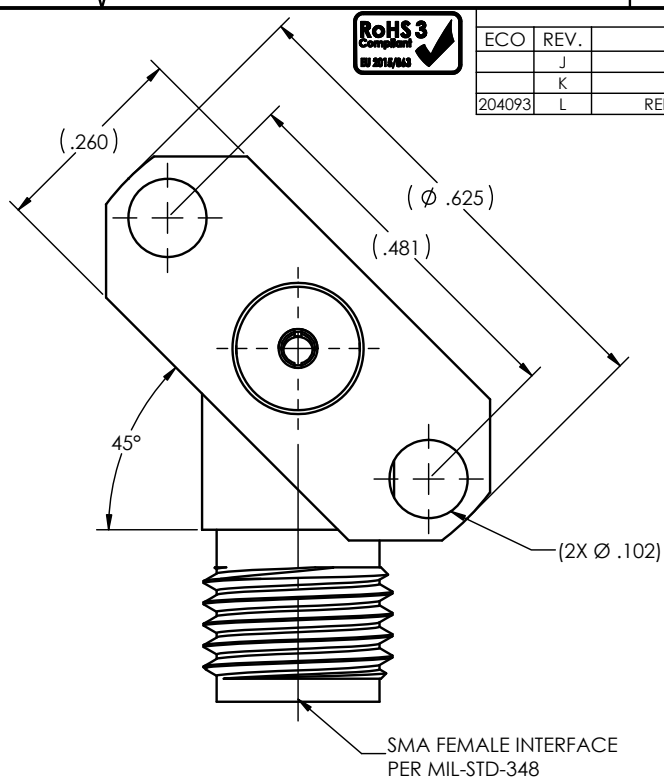
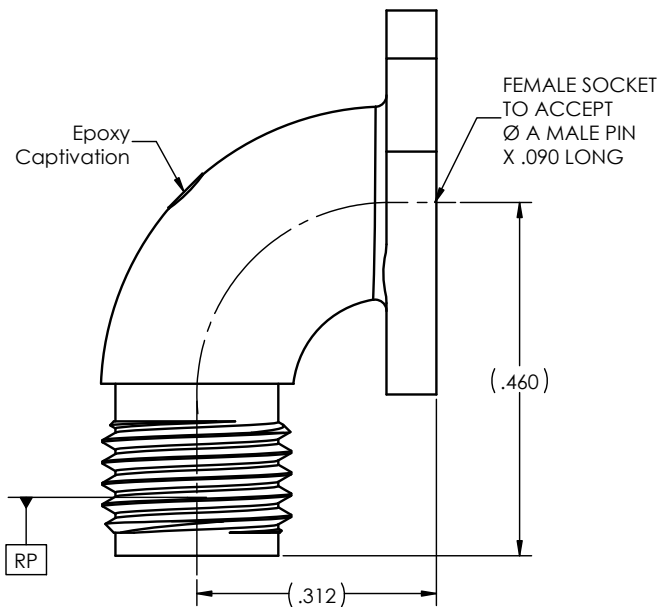
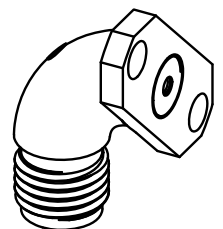


PART NO.	(Ø A)
-1CC	.036
-1CCSF	.036
-2CC	.020
-2CCSF	.020
-3CC	.010
-3CCSF	.010
-4CC	.012
-4CCSF	.012
-5CC	.015
-5CCSF	.015
-6CC	.018
-6CCSF	.018



REVISION HISTORY				
ECO	REV.	DESCRIPTION	DRAWN BY	DATE
	J	ECO 20843	DKN	12/21/2007
	K	ECO 27922	DKN	07/15/2015
204093	L	REDRAW WITH CHANGE	DKN	7/21/2025



MATERIAL(S):	ELECTRICAL(S):	MECHANICAL(S):	ENVIROMENTAL(S):
Body: 303 SST per ASTM A582 Center Conductor: BeCu Alloy per ASTM B196 Dielectric: PTFE Teflon per ASTM D1710 Epoxy: Sigma VF Type HV	Impedance: 50 Ohms Nominal Frequency Range: DC to 18 GHz VSWR: 1.30:1 max @ 18GHz Insertion Loss: .30 dB max @ 18GHz Working Voltage: 335 Vrms max @ Sea Level Dielectric Withstand Voltage: 1,000 Vrms min. RF HiPot Voltage: 670 Vrms min. @ 5MHz Insulation Resistance: 5,000 MegOhms min. RF Leakage: -(90 - fGHz) dB. Contact Resistance: Initial: Center Contact: 6.0 Milliohms max Outer Contact: 2.0 Milliohms max After Environment: Center Contact: 6.0 Milliohms max Outer Contact: 2.0 Milliohms max	Mating Characteristics: Interface per MIL-STD-348 Force to Engage & Disengage: Torque: 2 inch-lbs max Longitudinal Force: NA Center Contact Retention: Axial Force: 6 lbs min. Connector Durability: 500 Cycles min. @ 12 cycles/minute max Permeability: Less than 2.0 mu.	Temperature Range: -65°C to +125°C Thermal Shock: MIL-STD-202, Method 107, Test Condition A Moisture Resistance: MIL-STD-202, Method 106, except step 7b shall be obmitted. Insulation resistance at least 1000 MegOhms within 5 minutes after removal from humidity. Corrosion: MIL-STD-202, Method 101, Test Condition B Vibration: MIL-STD-202, Method 204, Test Condition D Shock: MIL-STD-202, Method 213, Test Condition I

FINISH(ES):
Body: (for SF's): Passivate per ASTM A967 or SAE AMS 2700. (for CC's): Gold plate per ASTM B488, Type II, Code C, Class 0.25, over nickel under plate per SAE AMS-QQ-N-290, Class 1. Center Conductor: Gold plate per ASTM B488, Type II, Code C or D, Class 1.25, over nickel under plate per SAE AMS-QQ-N-290, Class 1.

APPLICABLE Amphenol CDI DOCUMENTS		
WORK STANDARD	PROD INSTRUC	ASSY INSTRUC
NA	NA	NA

- TOLERANCES AND NOTES**  
 EXCEPT AS NOTED DIMENSIONS ARE IN INCHES.  
 LINEAR .XX ± .015 / .XXX ± .005  
 FRACTION ± 1/32 ANGULAR ± 1/2°
- INTERPRET DRAWING PER ASME Y14.5 - 2018
  - MACHINE FINISH: 63 RMS
  - BREAK ALL SHARP EDGES .003 MAX.
  - MACHINED FILLETS .005 MAX.
  - MACHINED SURFACES SQUARE TO RESPECTIVE AXIS WITHIN .005 INCHES PER INCH.
  - MACHINED DIAMETERS CONCENTRIC WITHIN .002 T.I.R.
  - DIMENSIONS TO BE MET AFTER PLATING.
  - CHAMFER ALL THREADS 45°.
  - THREADS PER H-28
  - REMOVE FRAYED EDGES ON TEFLON.
  - REMOVE ALL BURRS.

MATERIAL			SPECIFICATION		PROCUREMENT	
APPROVAL	INITIALS	DATE	TITLE		ADDRESS	
DRAWN BY	RC	03/21/2002	SMA FEMALE RADIUS R/A 2 HOLE FLANGE (.260X.625) MOUNT (45° LEFT) FIELD REPLACEABLE		12900 Alondra Blvd. Cerritos, CA 90703	
CHECKED BY	P.MAO	07/18/2014	SCALE		SUB-DIRECTORY/ OUTLINE/ SHEET 1 OF 1	
TEST ENG	-	-	SIZE 8:1		CAGE CODE 30990 DRAWING NO. OL 5659	
QUALITY	-	-	MFG ENG -		REV. L	
DESIGN ENG	ATV	06/12/2002	ECO APPRV DNg		7/22/2025	