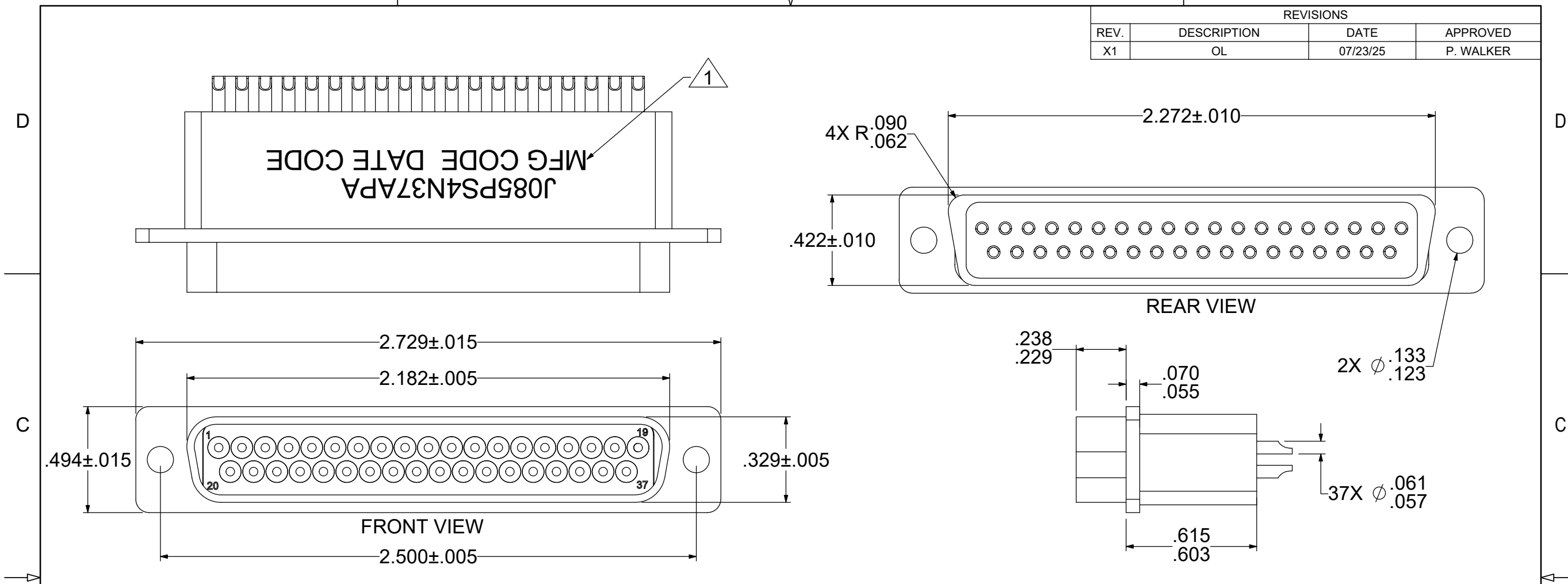


REVISIONS			
REV.	DESCRIPTION	DATE	APPROVED
X1	OL	07/23/25	P. WALKER



MATERIAL AND FINISH:

SHELL: ALUMINUM ALLOY PER ASTM-B211 OR ASTM-B221.
FINISH: ELECTROLESS NICKEL PLATE.

CONTACT: COPPER ALLOY PER SAE-AS39029.

FINISH: GOLD PLATED.

CAPACITORS: CERAMIC, PLANAR.

INSULATORS: EPOXY GLASS LAMINATE PER MIL-DTL-24308.

INTERFACIAL SEAL: FLUOROSILICONE PER MIL-DTL-24308.

GROUND SPRING: BERYLLIUM COPPER, SILVER PLATED.

FERRITE: NICKEL ZINC.

SOLDER PREFORMS: INDIUM SOLDER ALLOY, 50Pb/50In.

POTTING: EPOXY 2850 FT/CAT 9

ELECTRICALS:

PL-FILTER:

A: CAPACITANCE: 32,000 pF - 45,000 pF
B: I.R.: 5,000 MEGOHMS AT 100 VDC.
C: D.W.V.: 100 VDC, 10 SECONDS MINIMUM DWELL TIME.
D: ATTENUATION:
8 dB MIN AT 1 MHz
20 dB MIN AT 5 MHz
40 dB MIN AT 10 MHz
60 dB MIN AT 100 MHz
62 dB MIN AT 500-1,000 MHz

MECHANICAL:

ALL INTERFACE DIMENSIONS PER MIL-DTL-24308.

INSERT ARRANGEMENT A-4-1 PER MIL-DTL-24308 PIN ENGAGEMENT.

△1 MARKING: MARK WITH "J085PS4N37APA" MFG CODE DATE CODE IN LOCATION SHOWN

ENVIRONMENTAL:

TEMPERATURE RANGE: -55 C TO +125 C

ENVIRONMENTAL TESTING PER MIL-DTL-24308 AVAILABLE UPON REQUEST.

NOTES:

- THESE CHARACTERISTICS ARE TYPICAL AND FOR REFERENCE.
- FOR QUESTIONS PLEASE CONTACT SALES@AMPHENOLCDI.COM

THE INFORMATION CONTAINED HEREIN IS PROPRIETARY TO AMPHENOL AND SHALL IN NO WAY BE REPRODUCED OR DISCLOSED IN WHOLE OR IN PART OR USED FOR ANY DESIGN OR MANUFACTURE EXCEPT WHEN SUCH USER POSSESSES DIRECT, WRITTEN AUTHORIZATION FROM AMPHENOL.

DIMENSIONS ARE IN INCHES ± TOLERANCES UNLESS OTHERWISE NOTED		MATERIAL		SPECIFICATION		PROCUREMENT	
.XX ± 0.005"	ANGULAR 1°	APPROVAL	INITIALS	DATE	Amphenol		12900 Alondra Blvd. Cerritos, CA 90703
.XXX ± 0.003"		DRAWN BY	P. WALKER	07/23/2025	TITLE		CONN., 24308 37D PIN/S.C, J4
		CHECKED BY	XXX	XX/XX/XXXX	SCALE		3:1
		TEST ENG	XXX	XX/XX/XXXX	SUB-DIRECTORY/		XXXXXX
		QUALITY	XXX	XX/XX/XXXX	SHEET		1 OF 1
		DESIGN ENG	XXX	XX/XX/XXXX	DRAWING NO.		OL_J085PS4N37APA
		MFG ENG	XXX	XX/XX/XXXX	CAGE CODE	30990	REV. X1
		ECO APPRV	XXX	XX/XX/XXXX			