

PART NO.	A	B	FIGURE(S)
CCSF	1.103/1.305	NR	1
-1CCSF	NR	2.215/2.815	2



REVISION HISTORY				
ECO	REV.	DESCRIPTION	DRAWN BY	DATE
	B	ECO 21452	DKN	7/21/2008
	C	ECO 27588 (CHG FLAT DIM)	YP	4/5/2014
204755	L	REDRAW IN SW; NEW TEMPLATE; MATCHING REV.	YP	10/09/2025

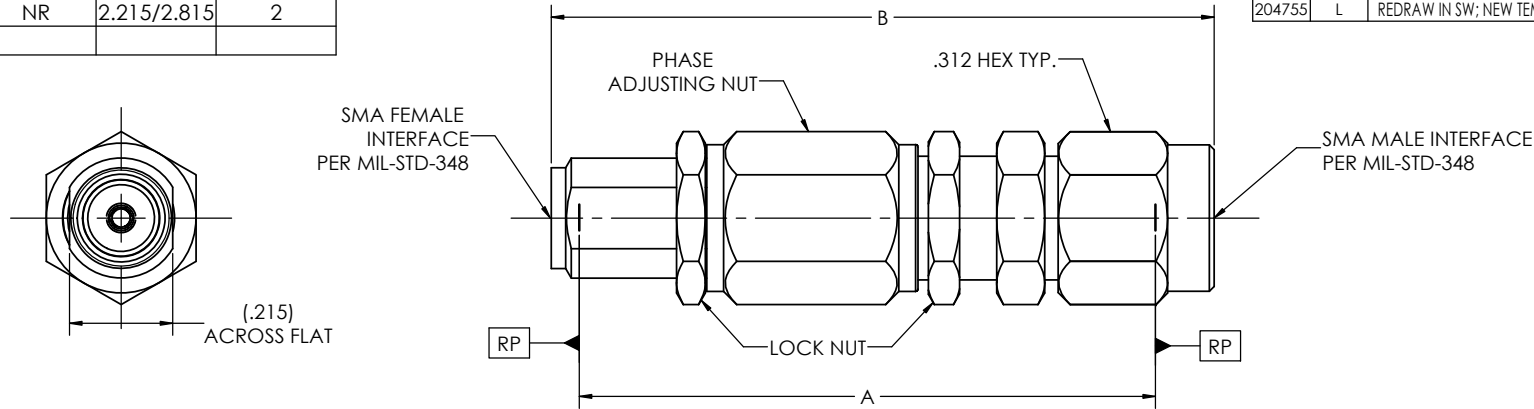


FIGURE 1

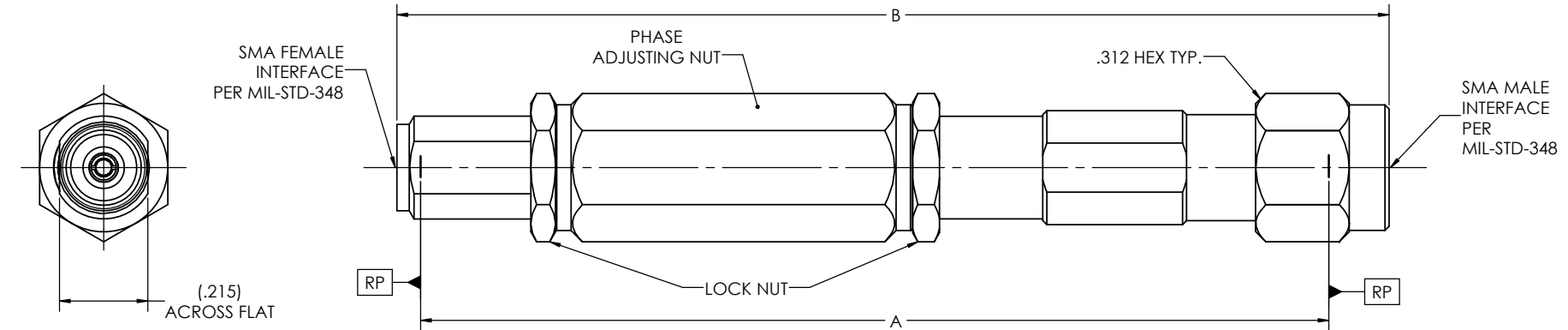


FIGURE 2

MATERIAL(S):	ELECTRICAL(S):	MECHANICAL(S):	ENVIROMENTAL(S):
Body, Locknut & Coupling Nut: 303 SST per ASTM A-582 Center Conductor: BeCu Alloy per ASTM B-196 Dielectric: PTFE Teflon per ASTM D-1710 Gasket: Silicone per A-A-59588	Impedance: 50 Ohms Nominal Frequency Range: DC to 26.0 GHz VSWR: 1.30:1 max @ 26.0 GHz Insertion Loss: 0.80 dB maxz RF Leakage: -80 dB max	Mating Characteristics: Interface per MIL-STD-348	Temperature Range: -65°C to +165°C Thermal Shock: MIL-STD-202, Method 107, Test Condition B Moisture Resistance: MIL-STD-202, Method 106, Insulation resistance at least 200 MegOhms within 5 minutes after removal from humidity. Corrosion: MIL-STD-202, Method 101, Test Condition B

FINISH(ES):	TOLERANCES AND NOTES	SEE NOTES	SEE NOTES	-																																										
Body, Locknut & Coupling Nut: Passivate per ASTM A-967 Center Conductor: Gold plate per ASTM B-488, over Nickel underplate per AMS-QQ-N-290.	<p>EXCEPT AS NOTED DIMENSIONS ARE IN INCHES. LINEAR .XX ±.015 / .XXX ±.005 FRACTION ± 1/32 ANGULAR ± 1/2°</p> <p>1. INTERPRET DRAWING PER ASME Y14.5 - 2018 2. MACHINE FINISH: 63 RMS 3. BREAK ALL SHARP EDGES .003 MAX. 4. MACHINED FILLETS .005 MAX. 5. MACHINED SURFACES SQUARE TO RESPECTIVE AXIS WITHIN .005 INCHES PER INCH. 6. MACHINED DIAMETERS CONCENTRIC WITHIN .002 T.I.R. 7. DIMENSIONS TO BE MET AFTER PLATING. 8. CHAMFER ALL THREADS 45°. 9. THREADS PER H-28 10. REMOVE FRAYED EDGES ON TEFLON. 11. REMOVE ALL BURRS.</p>	<table border="1"> <thead> <tr> <th>APPROVAL</th> <th>INITIALS</th> <th>DATE</th> </tr> </thead> <tbody> <tr> <td>DRAWN BY</td> <td>ATV</td> <td>3.22.99</td> </tr> <tr> <td>CHECKED BY</td> <td>-</td> <td>-</td> </tr> <tr> <td>TEST ENG</td> <td>-</td> <td>-</td> </tr> <tr> <td>QUALITY</td> <td>-</td> <td>-</td> </tr> <tr> <td>DESIGN ENG</td> <td>HT</td> <td>8.22.08</td> </tr> <tr> <td>MFG ENG</td> <td>-</td> <td>-</td> </tr> <tr> <td>ECO APPRV</td> <td>DNg</td> <td>10/13/2025</td> </tr> </tbody> </table>	APPROVAL	INITIALS	DATE	DRAWN BY	ATV	3.22.99	CHECKED BY	-	-	TEST ENG	-	-	QUALITY	-	-	DESIGN ENG	HT	8.22.08	MFG ENG	-	-	ECO APPRV	DNg	10/13/2025	<table border="1"> <thead> <tr> <th>MATERIAL</th> <th>SPECIFICATION</th> <th>PROCUREMENT</th> </tr> </thead> <tbody> <tr> <td colspan="3"> <p>Amphenol CDI 12900 Alondra Blvd. Cerritos, CA 90703</p> </td> </tr> <tr> <td colspan="3"> <p>TITLE: SMA FEMALE TO MALE PHASE ADJUSTABLE ADAPTER</p> </td> </tr> <tr> <td>SCALE: 5:1</td> <td>SUB-DIRECTORY/ OUTLINE/</td> <td>SHEET 1 OF 1</td> </tr> <tr> <td>SIZE: C</td> <td>CAGE CODE: 30990</td> <td>DRAWING NO.: OL 5998</td> </tr> <tr> <td></td> <td></td> <td>REV. L</td> </tr> </tbody> </table>	MATERIAL	SPECIFICATION	PROCUREMENT	<p>Amphenol CDI 12900 Alondra Blvd. Cerritos, CA 90703</p>			<p>TITLE: SMA FEMALE TO MALE PHASE ADJUSTABLE ADAPTER</p>			SCALE: 5:1	SUB-DIRECTORY/ OUTLINE/	SHEET 1 OF 1	SIZE: C	CAGE CODE: 30990	DRAWING NO.: OL 5998			REV. L	
APPROVAL	INITIALS	DATE																																												
DRAWN BY	ATV	3.22.99																																												
CHECKED BY	-	-																																												
TEST ENG	-	-																																												
QUALITY	-	-																																												
DESIGN ENG	HT	8.22.08																																												
MFG ENG	-	-																																												
ECO APPRV	DNg	10/13/2025																																												
MATERIAL	SPECIFICATION	PROCUREMENT																																												
<p>Amphenol CDI 12900 Alondra Blvd. Cerritos, CA 90703</p>																																														
<p>TITLE: SMA FEMALE TO MALE PHASE ADJUSTABLE ADAPTER</p>																																														
SCALE: 5:1	SUB-DIRECTORY/ OUTLINE/	SHEET 1 OF 1																																												
SIZE: C	CAGE CODE: 30990	DRAWING NO.: OL 5998																																												
		REV. L																																												