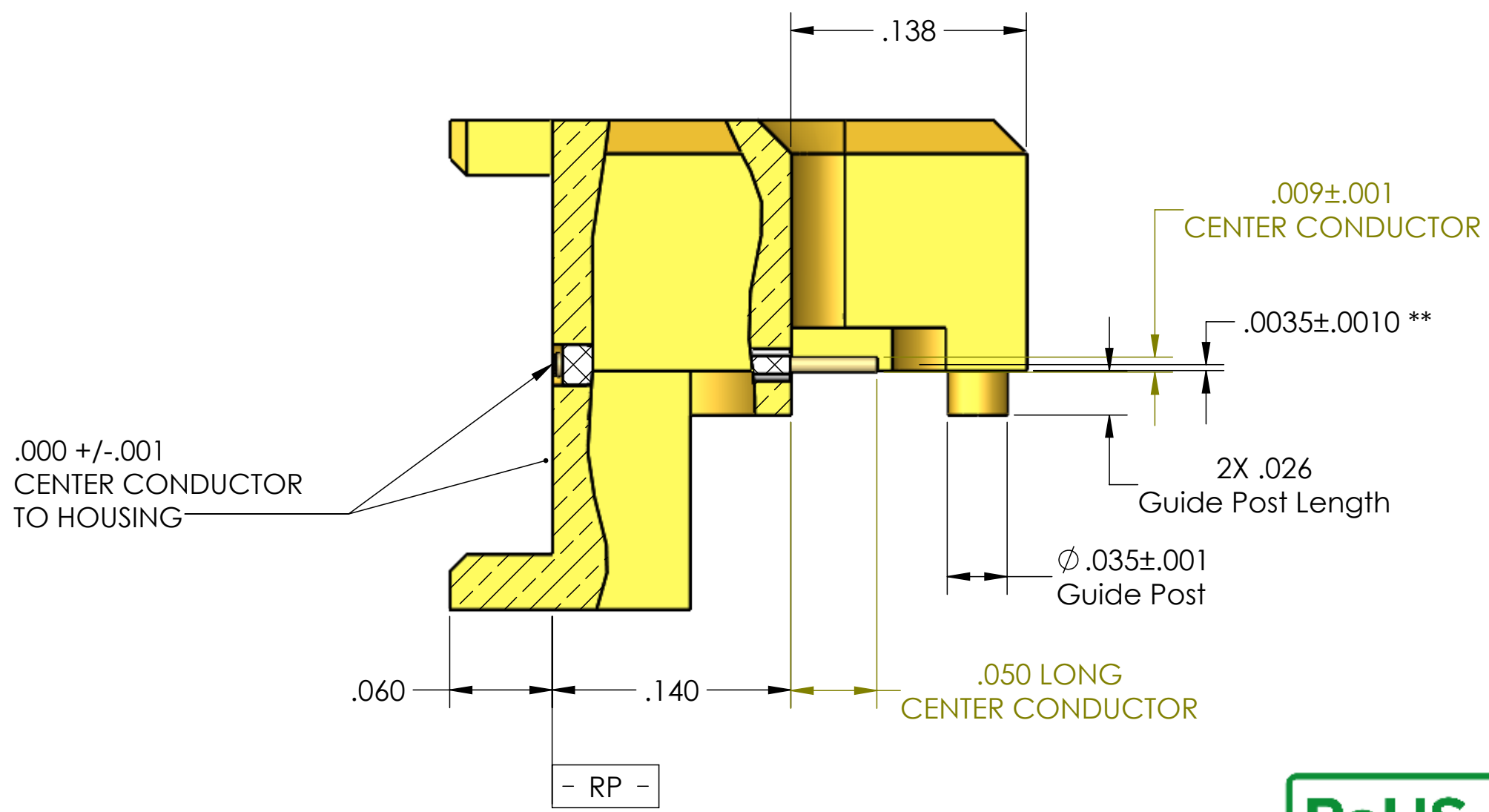


PART NO.	APPLICABLE NOTE(S)	No OF POSITIONS	PLATING THICKNESS, μ IN	SHEET
TMB-SEH22-10	1,2	2	10	1, 2
TMB-SEH22-30	1,2	2	30	1, 2
TMB-SEH22-50	1,2	2	50	1, 2
TMB-SEH24-10	1,2	4	10	1, 3
TMB-SEH24-30	1,2	4	30	1, 3
TMB-SEH24-50	1,2	4	50	1, 3
TMB-SEH26-10	1,2	6	10	1, 4
TMB-SEH26-30	1,2	6	30	1, 4
TMB-SEH26-50	1,2	6	50	1, 4
TMB-SEH28-10	1,2	8	10	1, 5
TMB-SEH28-30	1,2	8	30	1, 5
TMB-SEH28-50	1,2	8	50	1, 5
TMB-SEH210-10	1,2	10	10	1, 6
TMB-SEH210-30	1,2	10	30	1, 6
TMB-SEH210-50	1,2	10	50	1, 6

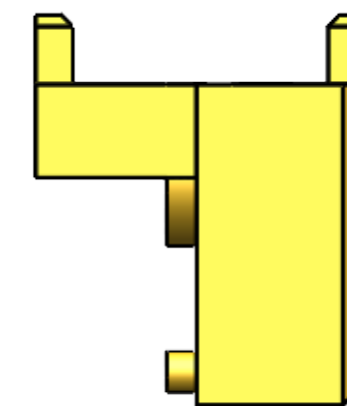
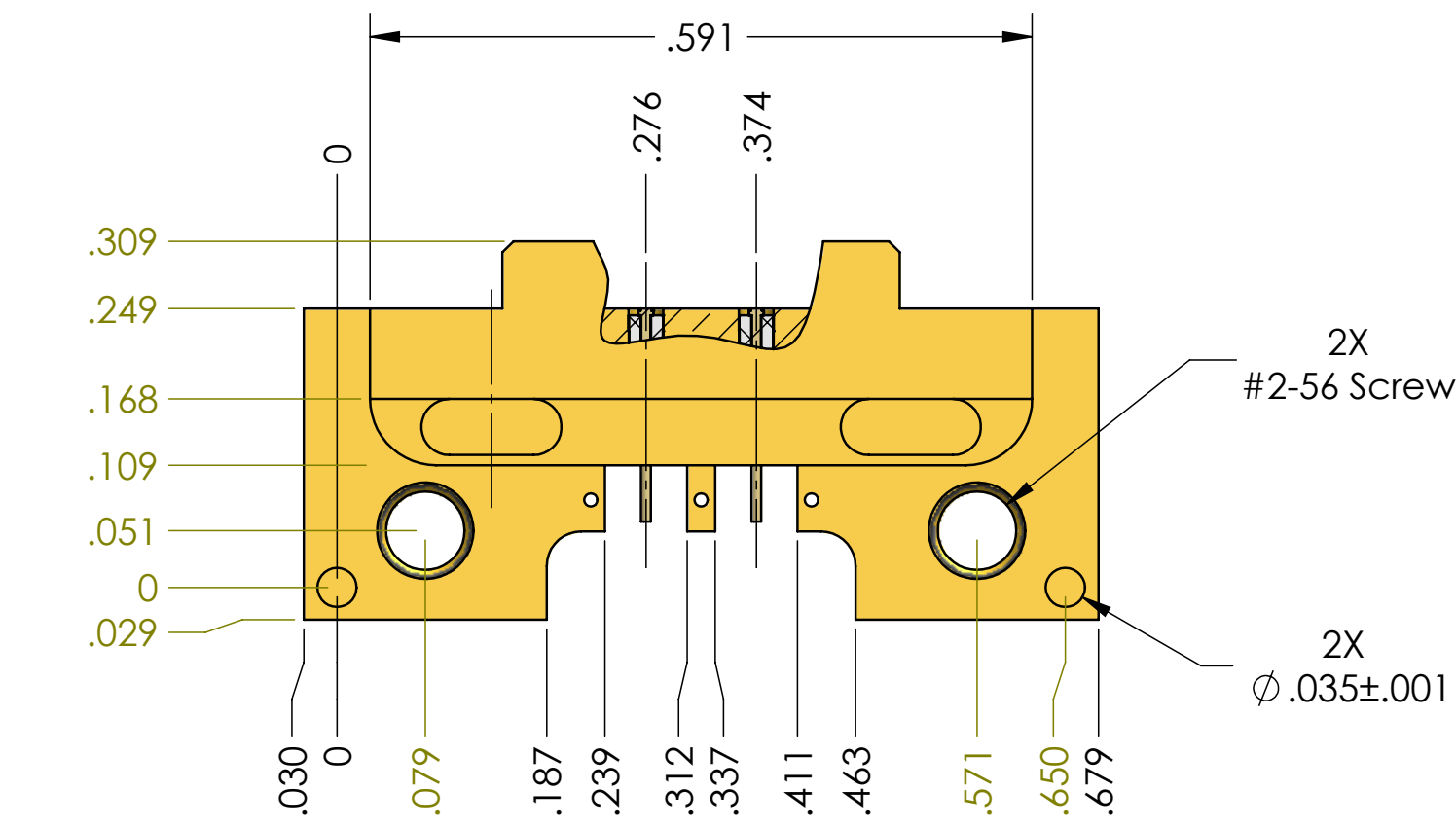
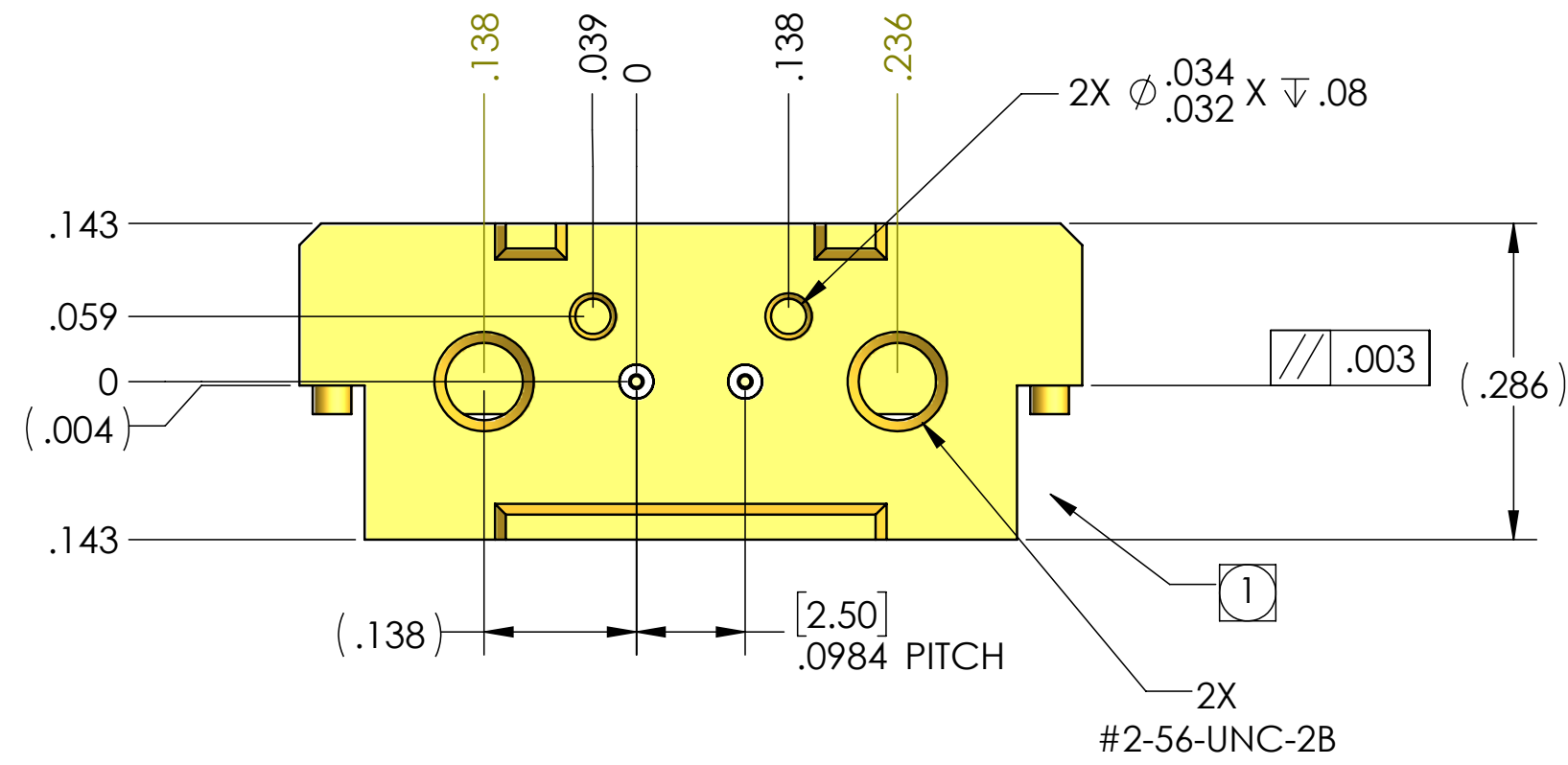
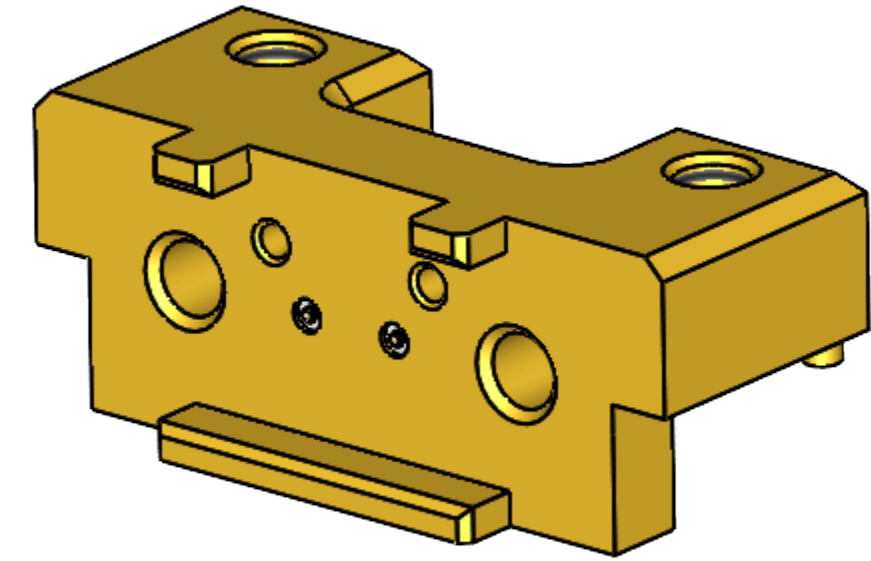
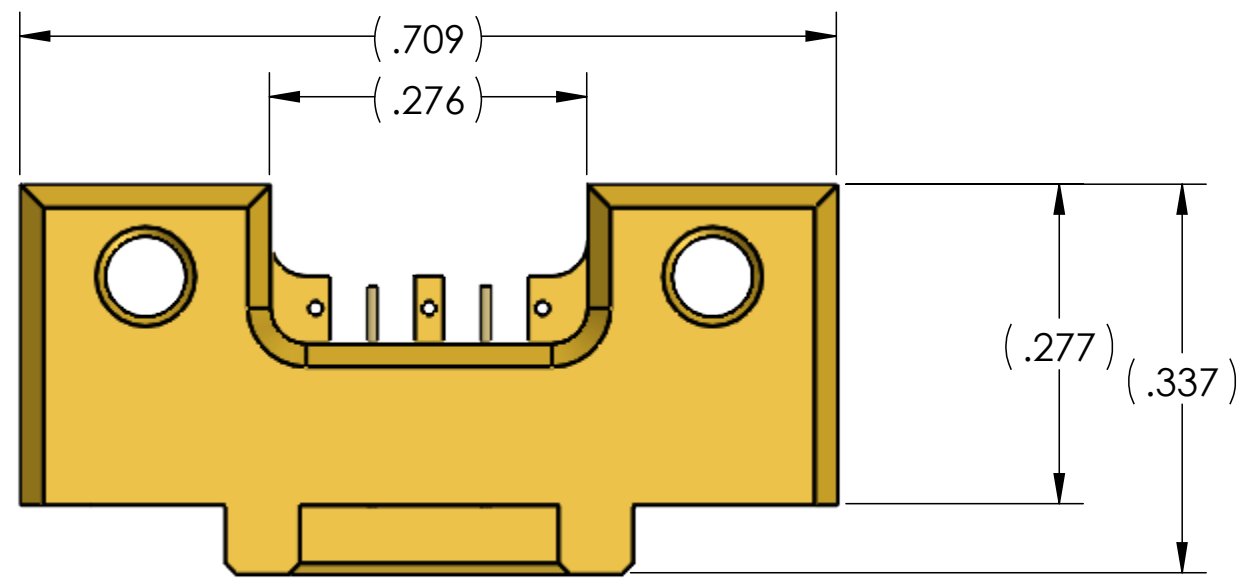
NOTE(S) :
 1. RECOMMENDED FOOTPRINT: SEE REFERENCE DRAWING "TMB-SEH2X-FOOTPRINT"

REVISIONS			
REV.	DESCRIPTION	DATE	BY
00	INITIAL RELEASE	01.20.20	HT
01	REMOVE NOTE "SCREWS TO BE PACKAGED AND SHIPPED SEPERATELY"	11.30.20	HT



MATERIAL(S):	ELECTRICAL(S):	MECHANICAL(S):	ENVIRONMENTAL(S):
Housing: Brass Alloy per ASTM B-16 Center-conductor: BeCu Alloy per ASTM B-196 Insulator: PTFE Screws: Stainless steel Interface Brakcet: Aluminum 6061	Impedance: 50 Ohms Nominal Frequency Range: DC to 65 GHz VSWR: 1.50:1 MAX. DC to 65 GHz Insertion Loss: .07 x Sqrt(F) (F in GHz) Working Voltage: 335 Vrms max @ Sea Level Test Voltage: 500 Vrms Insulation Resistance: 5000 MegOhms min. Contact Current: 1.2 A DC max. Contact Resistance: Center Contact: 35 m Ω Outer Contact: 10 m Ω	Mating Characteristics: COREHC2 (2.5mm) Interface per CarlisleIT Force to Engage: CoreHC2 (Individual): .85 Lb Typ. Center contact Force: Individual: .16 Lb Typ. Connector Durability: 10,000 Cycles min. @ 12 cycles/minute max	Temperature Range: -65°C to +125°C Thermal Shock: MIL-STD-202, Method 107, Test Condition B Moisture Resistance: MIL-STD-202, Method 106, Insulation resistance at least 200 MegaOhms within 5 minutes after removal from humidity. Vibration: MIL-STD-202, Method 204, Test Condition A, except 5g Peak Shock: MIL-STD-202, Method 213, Test Condition I, except 10g Peak

FINISH(ES):	APPLICABLE CARLISLE IT DOCUMENTS	TOLERANCES AND NOTES	MATERIAL	SPECIFICATION	PROCUREMENT																																						
Housing and Center Conductor: Gold plate per ASTM B-488, over Nickel underplate per SAE-AMS-QQ-N-290 Screws: Passivated Interface Bracket: Anodized, Clear	<table border="1"> <thead> <tr> <th>WORK STANDARD</th> <th>PROD INSTRUC</th> <th>ASSY INSTRUC</th> </tr> </thead> <tbody> <tr> <td>NA</td> <td>NA</td> <td>NA</td> </tr> </tbody> </table>	WORK STANDARD	PROD INSTRUC	ASSY INSTRUC	NA	NA	NA	EXCEPT AS NOTED DIMENSIONS ARE IN INCHES. LINEAR .XX ±.015 ANGULAR ± 1/2° FRACTION ± 1/32 1. MACHINE FINISH: $\sqrt{3}$ RMS 2. BREAK ALL SHARP EDGES .003 MAX. 3. MACHINED FILLETS .005 MAX. 4. MACHINED SURFACES SQUARE TO RESPECTIVE AXIS WITHIN .005 INCHES PER INCH. 5. MACHINED DIAMETERS CONCENTRIC WITHIN .002 T.I.R. 6. DIMENSIONS TO BE MET BEFORE PLATING. 7. CHAMFER ALL THREADS 45°. 8. THREADS PER H-28 9. REMOVE FRAVED EDGES ON TEFLON. 10. REMOVE ALL BURRS.	<table border="1"> <thead> <tr> <th>APPROVAL INITIALS</th> <th>DATE</th> </tr> </thead> <tbody> <tr> <td>DRAWN BY HT</td> <td>02.20.20</td> </tr> <tr> <td>CHECKED BY -</td> <td>-</td> </tr> <tr> <td>TEST ENGR -</td> <td>-</td> </tr> <tr> <td>QUALITY -</td> <td>-</td> </tr> <tr> <td>DESIGN ENG HT</td> <td>02.20.20</td> </tr> <tr> <td>MFG. ENGR -</td> <td>-</td> </tr> <tr> <td>ECO APPRV -</td> <td>-</td> </tr> </tbody> </table>	APPROVAL INITIALS	DATE	DRAWN BY HT	02.20.20	CHECKED BY -	-	TEST ENGR -	-	QUALITY -	-	DESIGN ENG HT	02.20.20	MFG. ENGR -	-	ECO APPRV -	-	<table border="1"> <thead> <tr> <th>SCALE</th> <th>SUB-DIRECTORY/</th> </tr> </thead> <tbody> <tr> <td>1:1</td> <td></td> </tr> </tbody> </table>	SCALE	SUB-DIRECTORY/	1:1		<table border="1"> <thead> <tr> <th>SIZE</th> <th>CAGE CODE</th> <th>DRAWING NO.</th> <th>SHEET</th> <th>OF</th> <th>REV.</th> </tr> </thead> <tbody> <tr> <td>C</td> <td>30990</td> <td>TMB-SEH2X-XX</td> <td>1</td> <td>6</td> <td>01</td> </tr> </tbody> </table>	SIZE	CAGE CODE	DRAWING NO.	SHEET	OF	REV.	C	30990	TMB-SEH2X-XX	1	6	01
WORK STANDARD	PROD INSTRUC	ASSY INSTRUC																																									
NA	NA	NA																																									
APPROVAL INITIALS	DATE																																										
DRAWN BY HT	02.20.20																																										
CHECKED BY -	-																																										
TEST ENGR -	-																																										
QUALITY -	-																																										
DESIGN ENG HT	02.20.20																																										
MFG. ENGR -	-																																										
ECO APPRV -	-																																										
SCALE	SUB-DIRECTORY/																																										
1:1																																											
SIZE	CAGE CODE	DRAWING NO.	SHEET	OF	REV.																																						
C	30990	TMB-SEH2X-XX	1	6	01																																						



2 POSITION

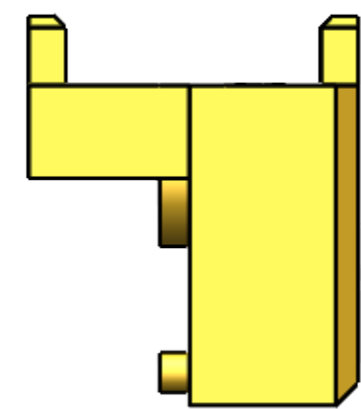
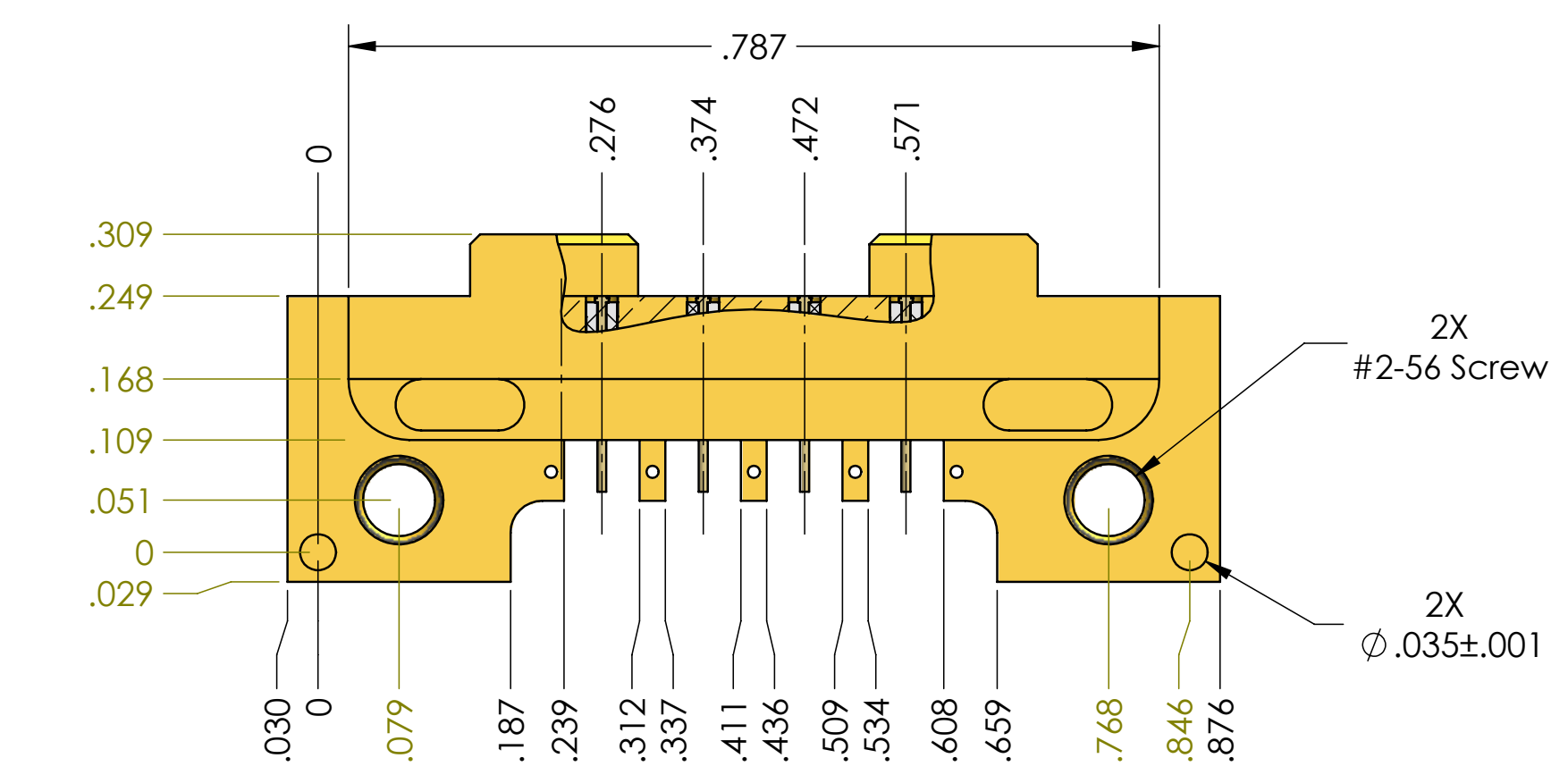
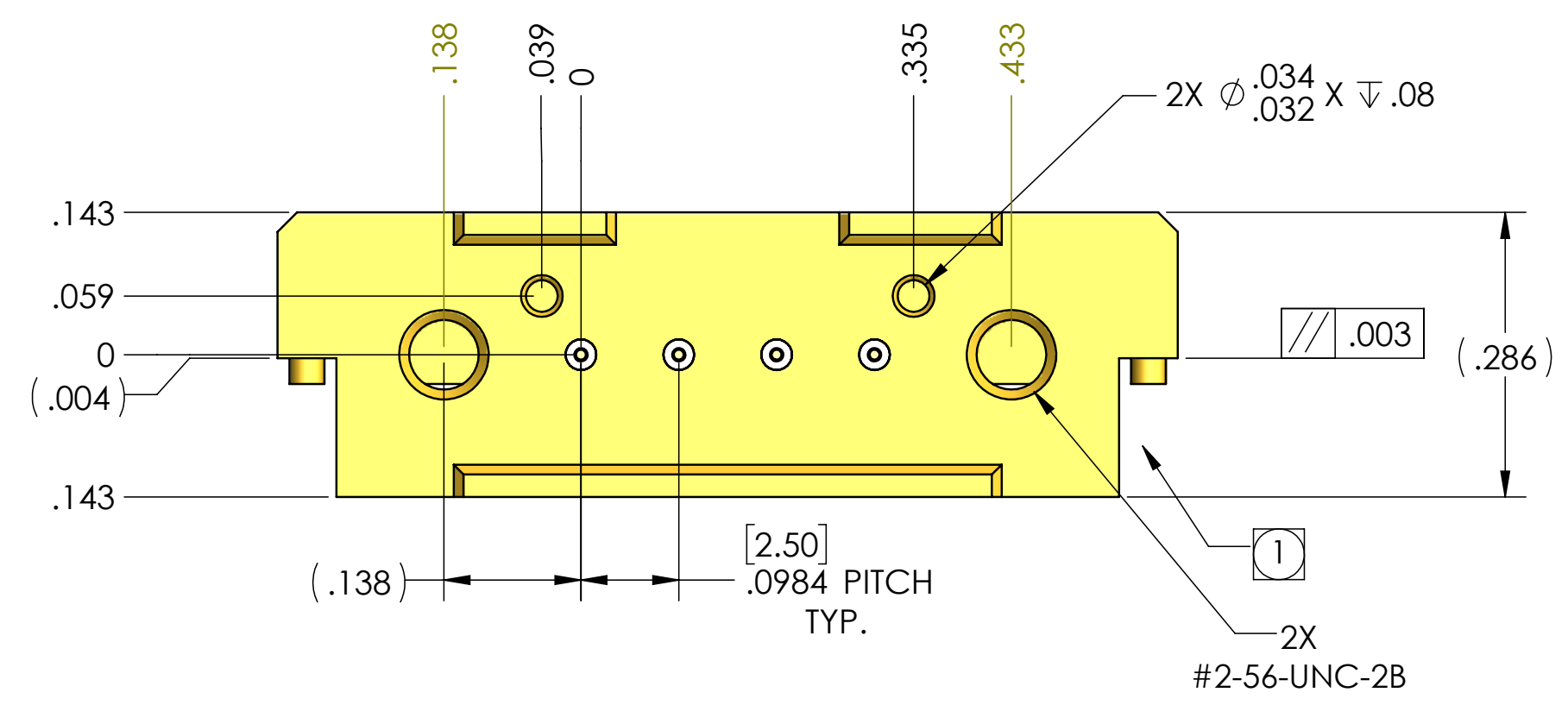
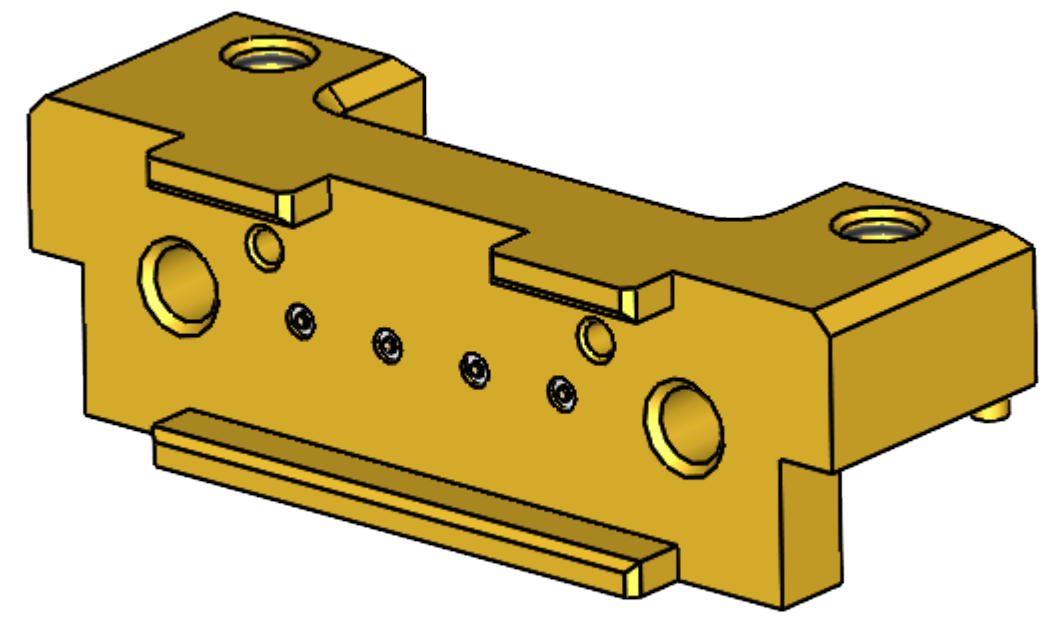
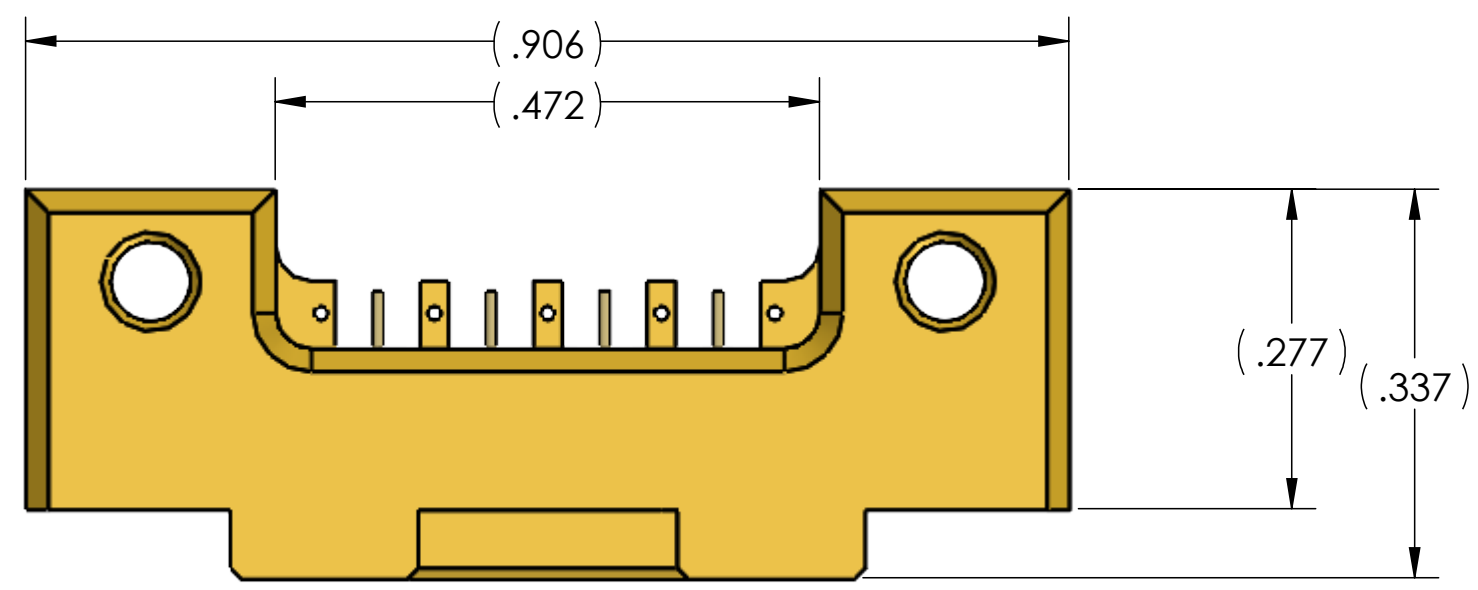
SCALE	SUB-DIRECTORY/		SHEET 2 OF	6
6:1				
SIZE	CAGE CODE	DRAWING NO.	REV.	
C	30990	TMB-SEH2X-XX	01	

4

3

2

1



4 POSITION

4

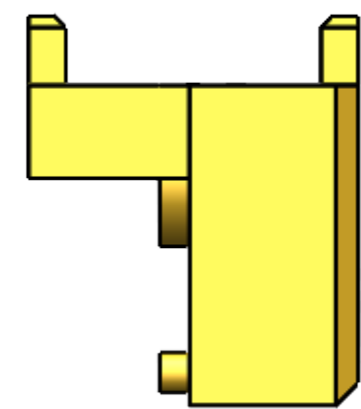
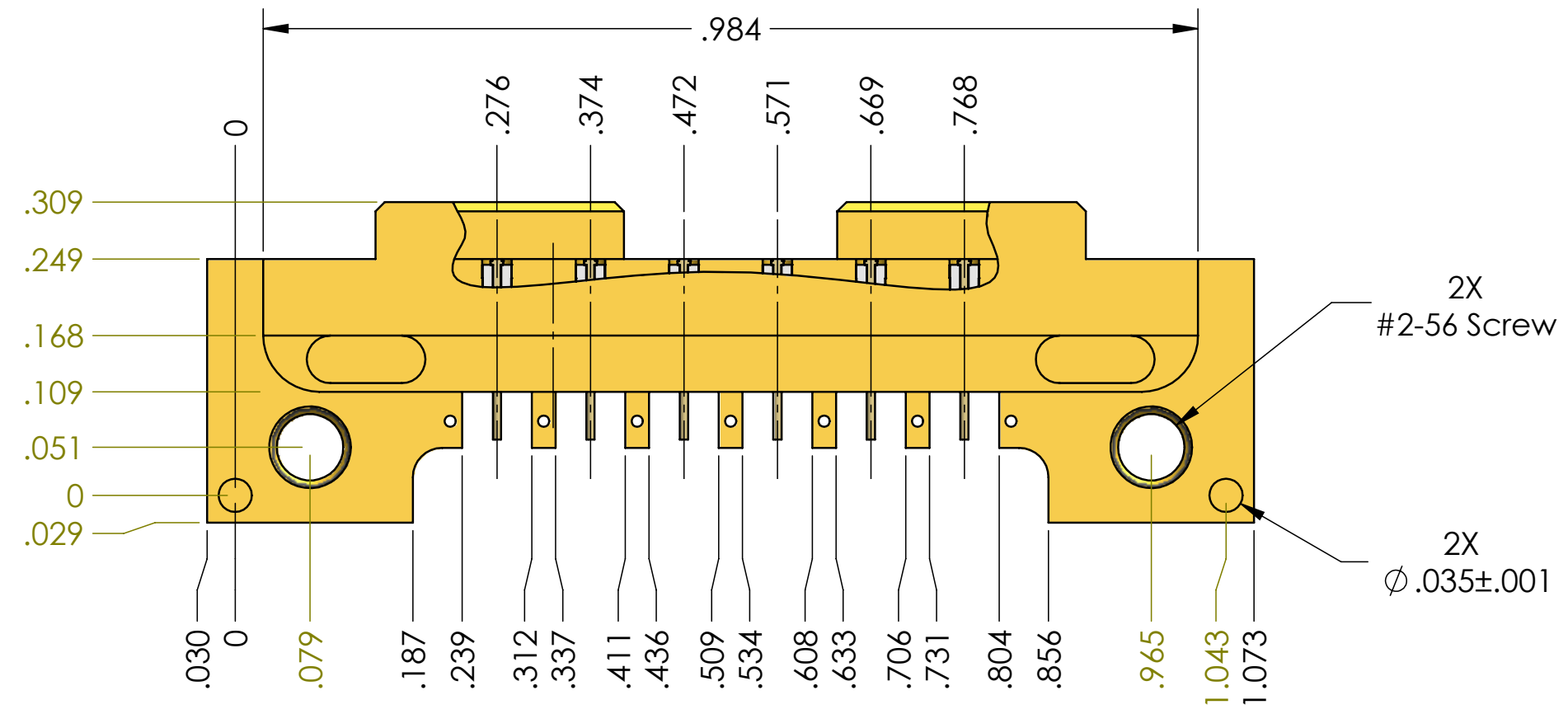
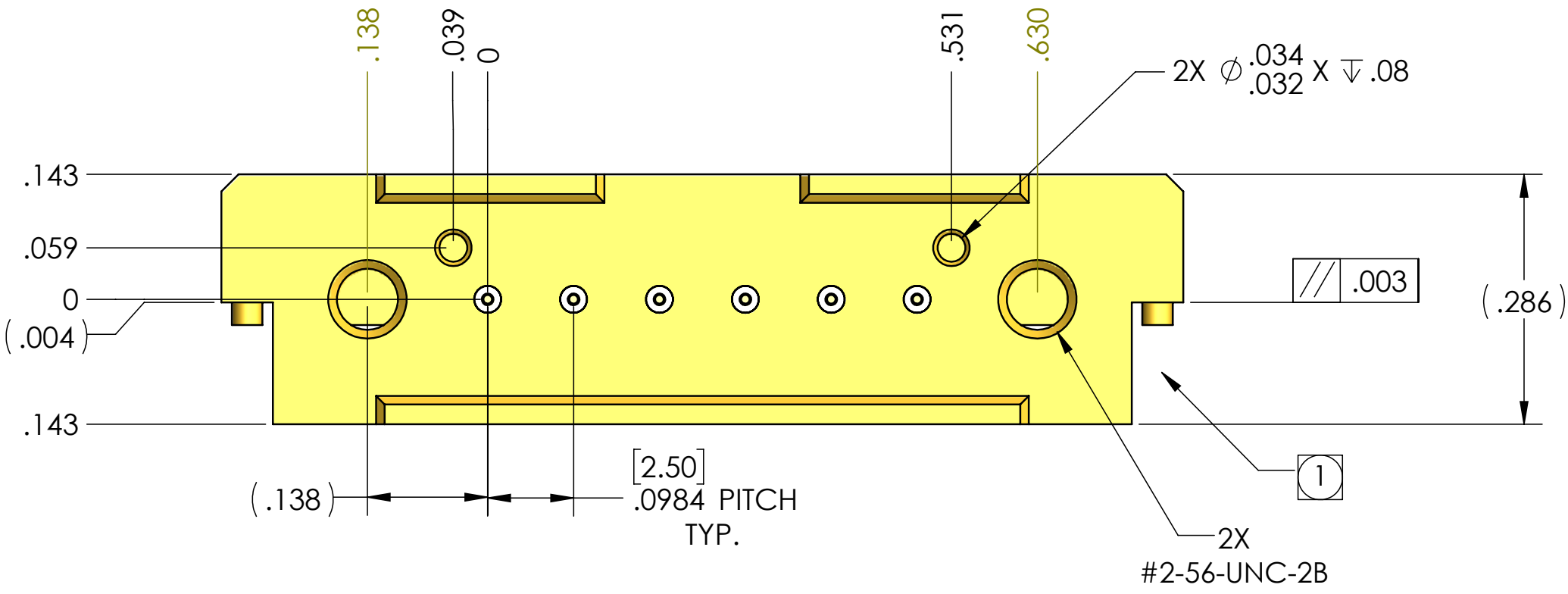
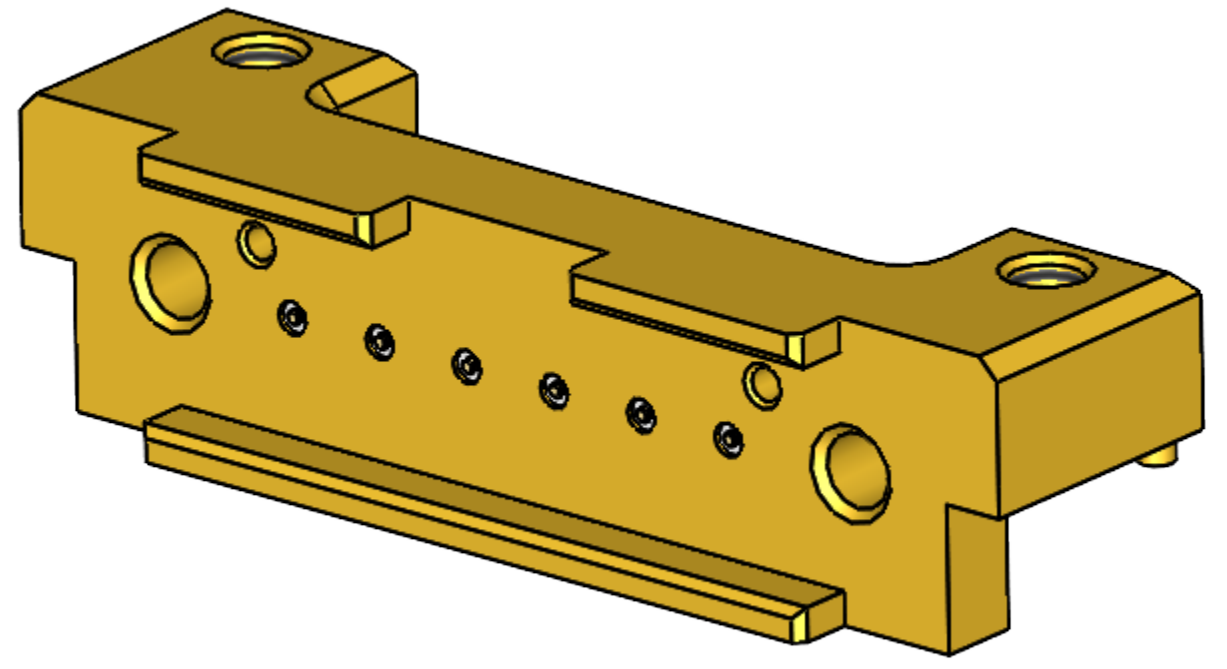
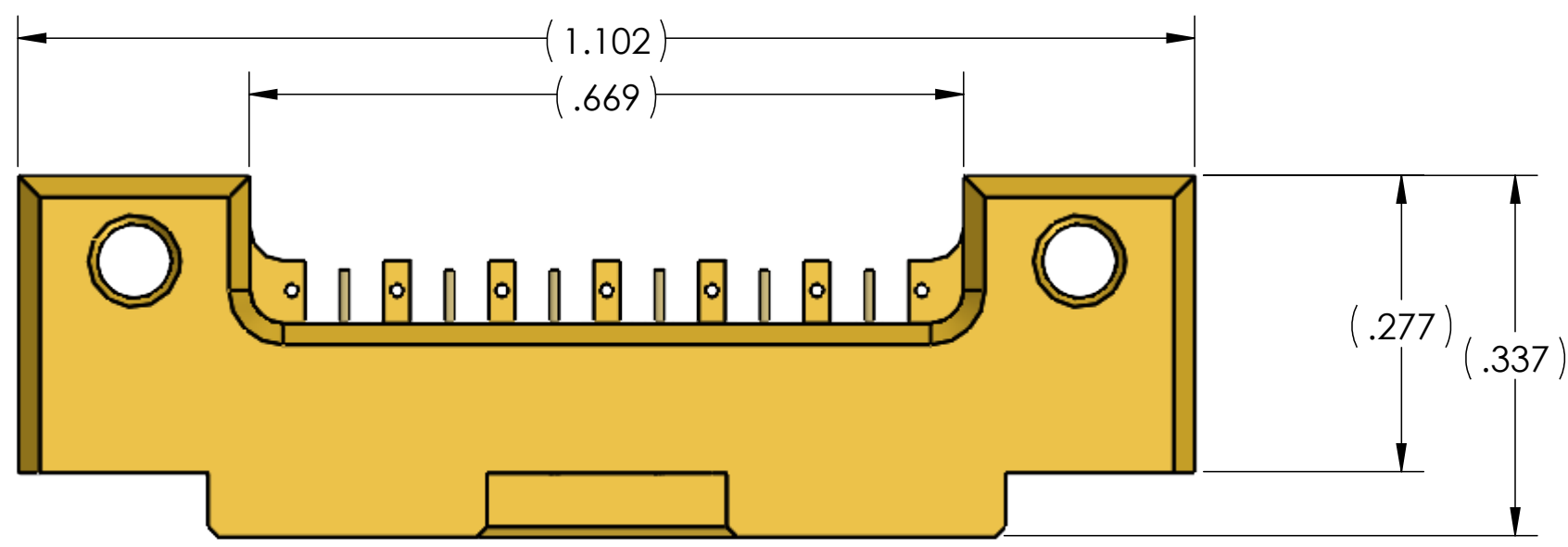
3

2

1

SCALE	SUB-DIRECTORY/		SHEET 3 OF 6
6:1			
SIZE	CAGE CODE	DRAWING NO.	REV.
C	30990	TMB-SEH2X-XX	01

4 3 2 1



6 POSITION

4 3 2 1

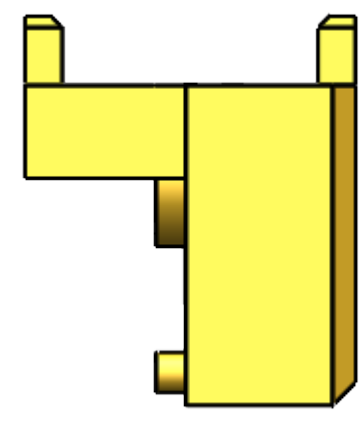
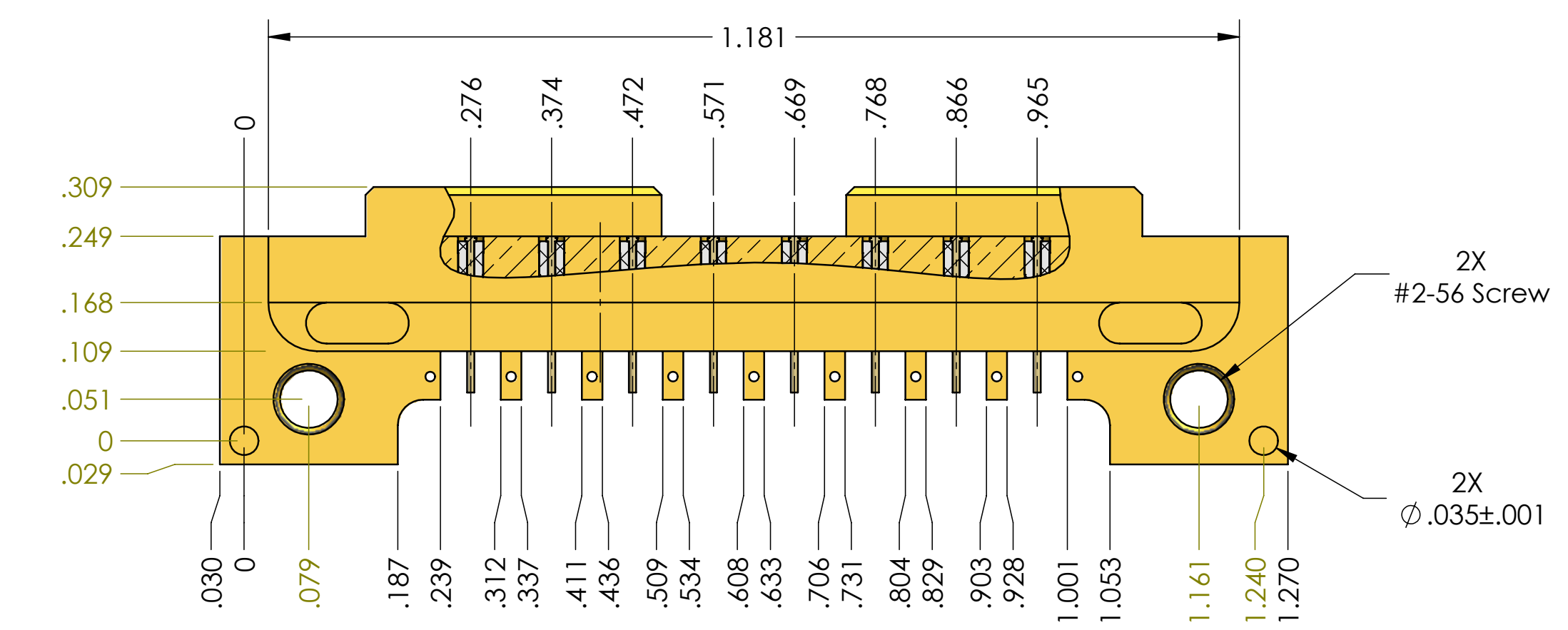
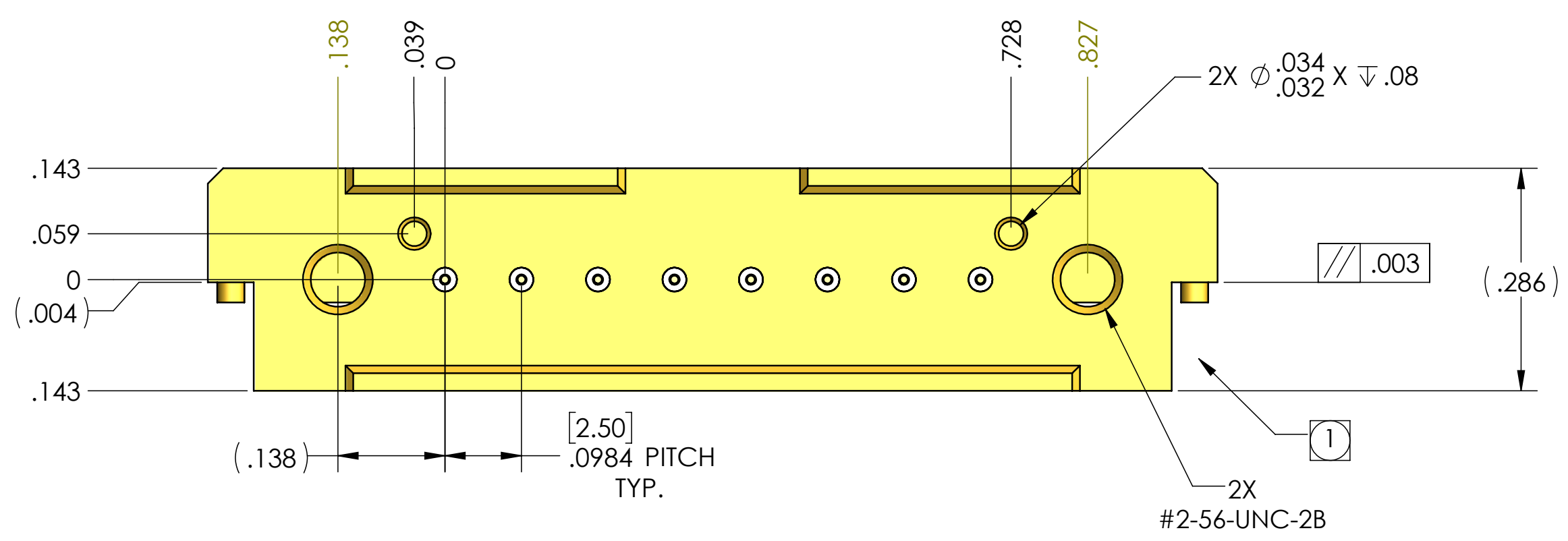
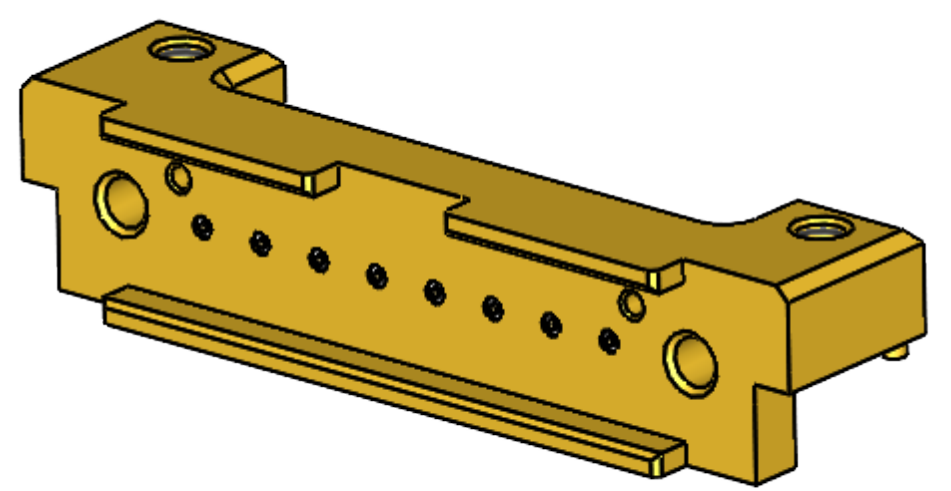
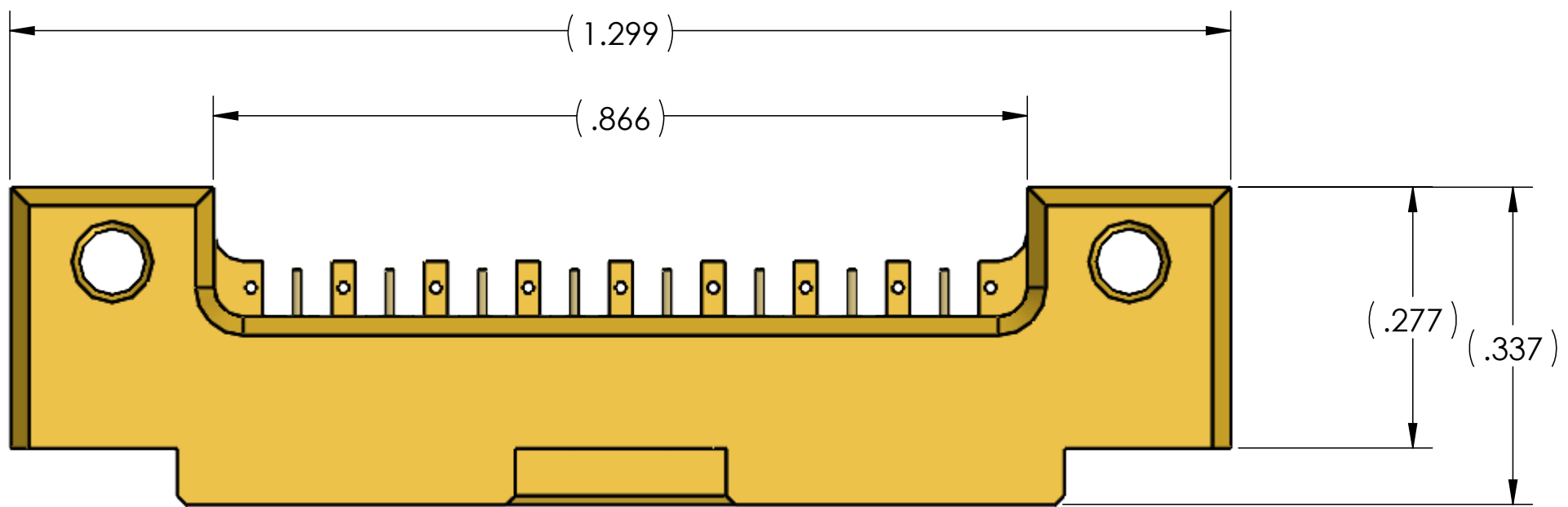
SCALE	SUB-DIRECTORY/		SHEET 4 OF 6
6:1			REV. 01
SIZE	CAGE CODE	DRAWING NO.	
C	30990	TMB-SEH2X-XX	

4

3

2

1



8 POSITION

SCALE	SUB-DIRECTORY/	SHEET 5 OF	6
6:1			
SIZE	CAGE CODE	DRAWING NO.	REV.
C	30990	TMB-SEH2X-XX	01

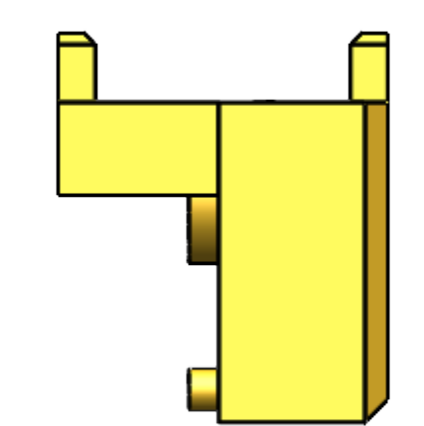
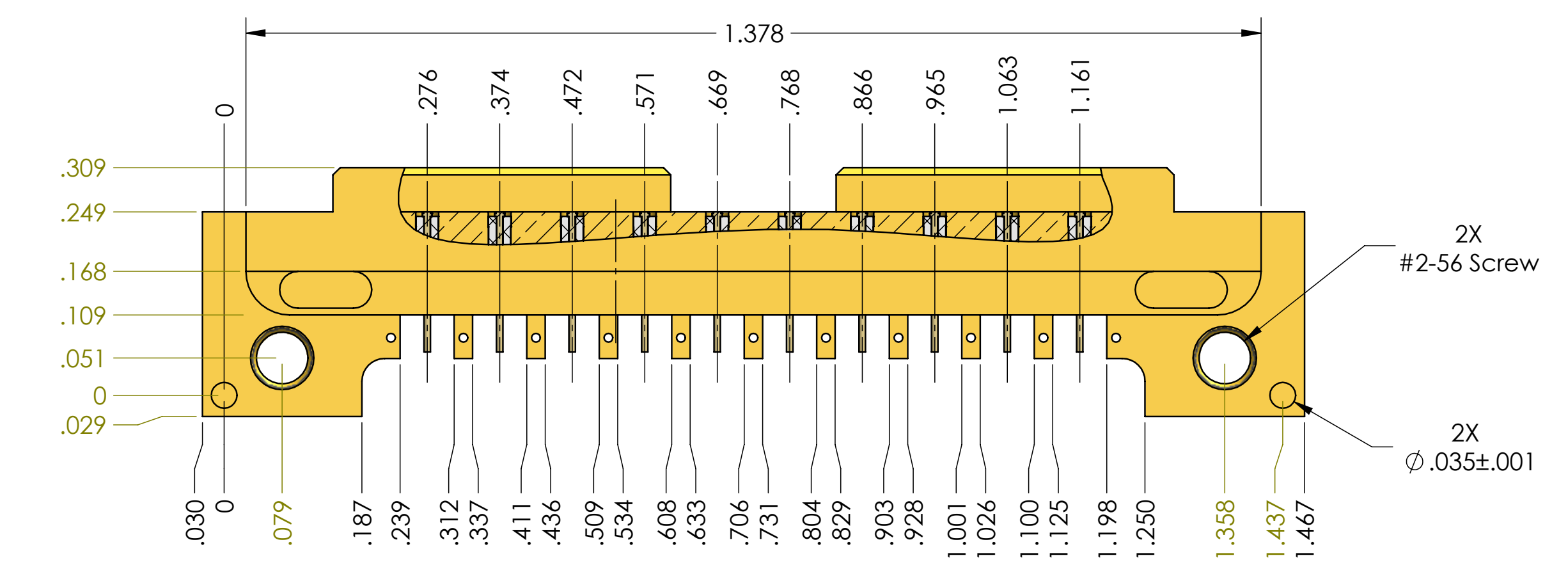
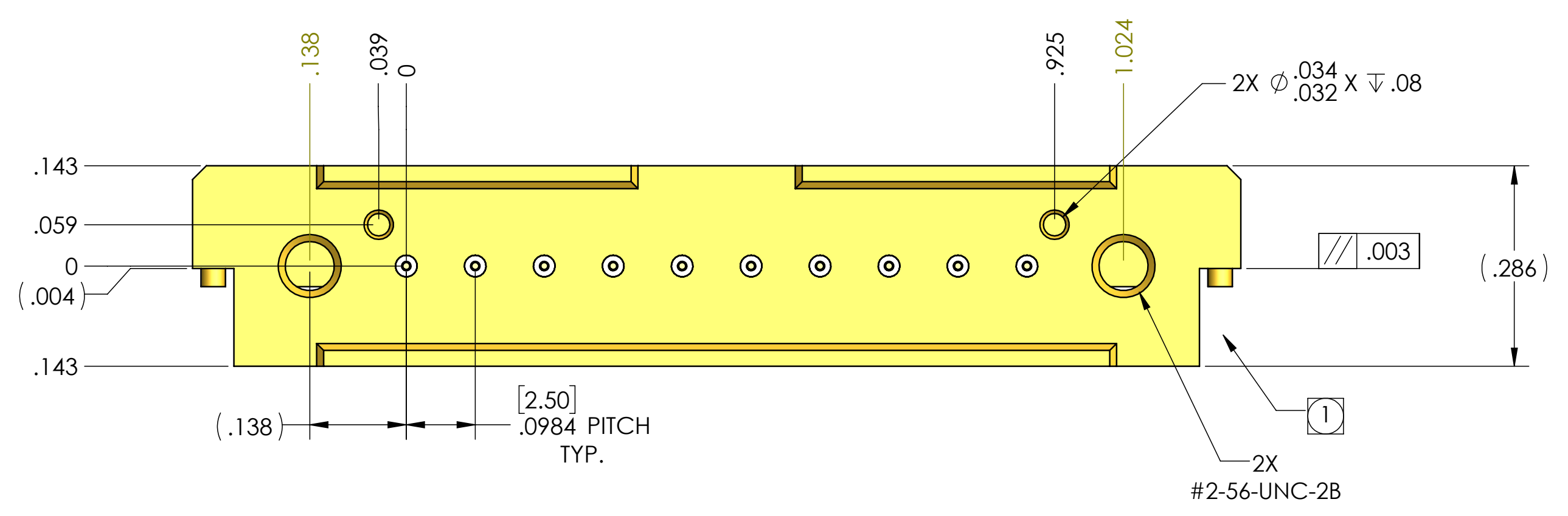
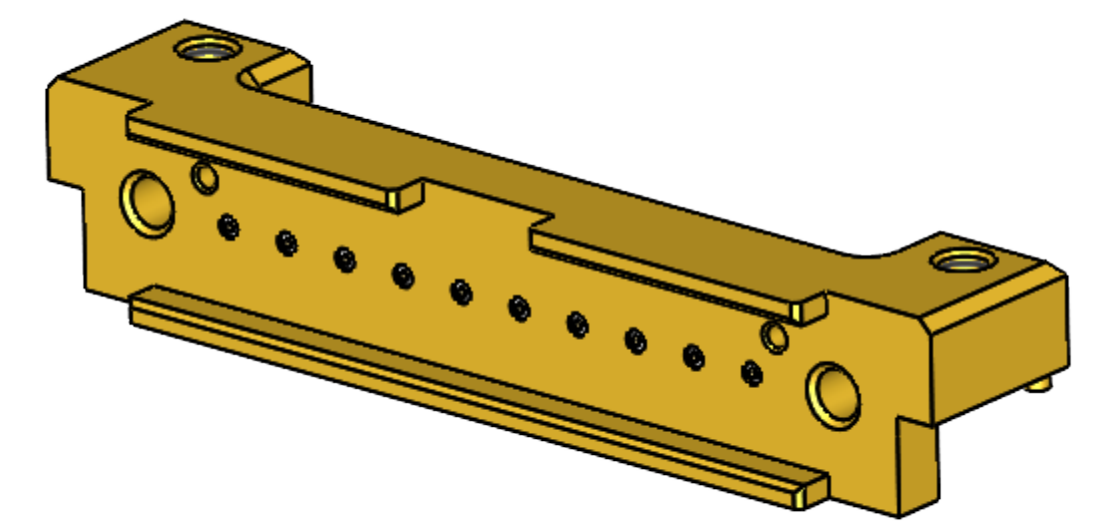
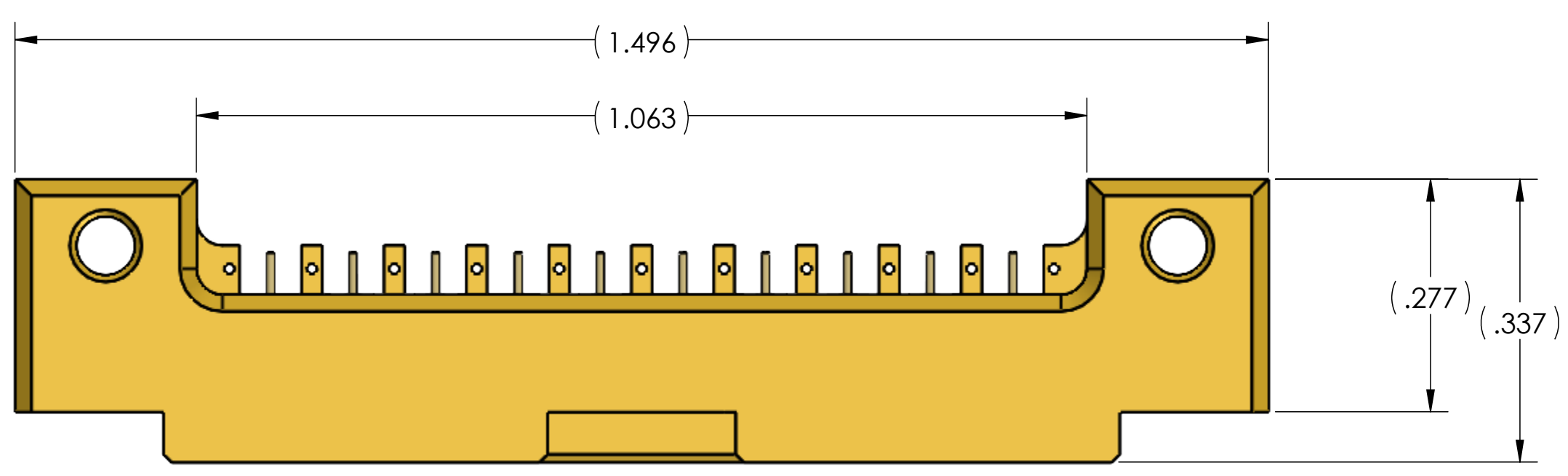
4

3

2

1

4 3 2 1



10 POSITION

SCALE	SUB-DIRECTORY/	SHEET 6 OF	6
6:1			
SIZE	CAGE CODE	DRAWING NO.	REV.
C	30990	TMB-SEH2X-XX	01

4 3 2 1